

What's it like to live next to a Refinery or Oil Drilling?
What are they doing to *your* planet?
What's happening with fossil fuel phaseout?

COMMUNITIES
FOR A BETTER
ENVIRONMENT
established 1978



**Alicia Rivera, CBE, April 22, 2025,
CA Climate Summit, Sacramento**



What is happening with California Refineries?

- **Transportation electrification policy is working!** Demand for gasoline is going down.
- Two Northern California refineries stopped gasoline production in 2020 and 2024 (now biofuels),
- **Phillips 66 in LA will close at the end of this year.**
- **Even with those 3 major refineries closing,** California still has enough capacity on average for the time being, because of lowering demand.



The Phillips 66 LA closure cuts two ways – 1) A welcome surprise to neighbors – adults and children are exposed to smoke and ongoing pollution; sometimes not allowed to go out and play. People next to refineries have high levels of respiratory illnesses and cancer. **2) Devastating to hundreds of refinery workers**, losing high-paying jobs, and needing support.





Why do we need to manage phase out of refineries and oil drilling? Because they are killing people and the planet.

- **Frontline refinery communities face repeated flaring, explosions, fires, continuous, invisible pollution, asthma, cancer risks.**
- **Our people also live next to oil drilling, like this site of a crude oil pipeline rupture onto a major public street.**

COMMUNITIES
FOR A BETTER
ENVIRONMENT
established 1978

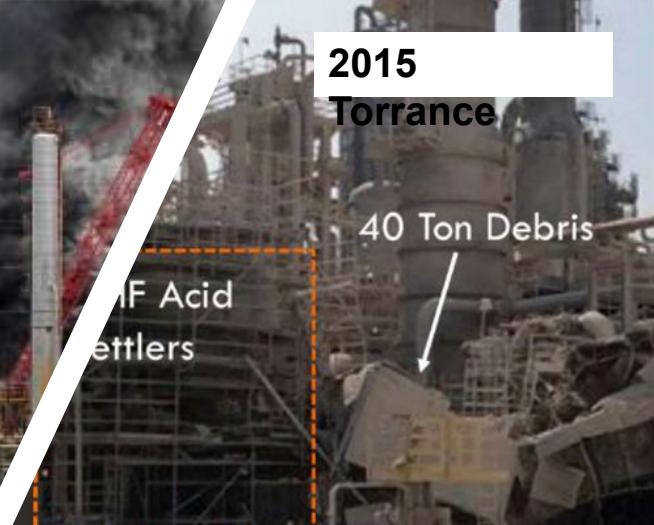




2020 Marathon LA



**2025 PBF
Martinez**

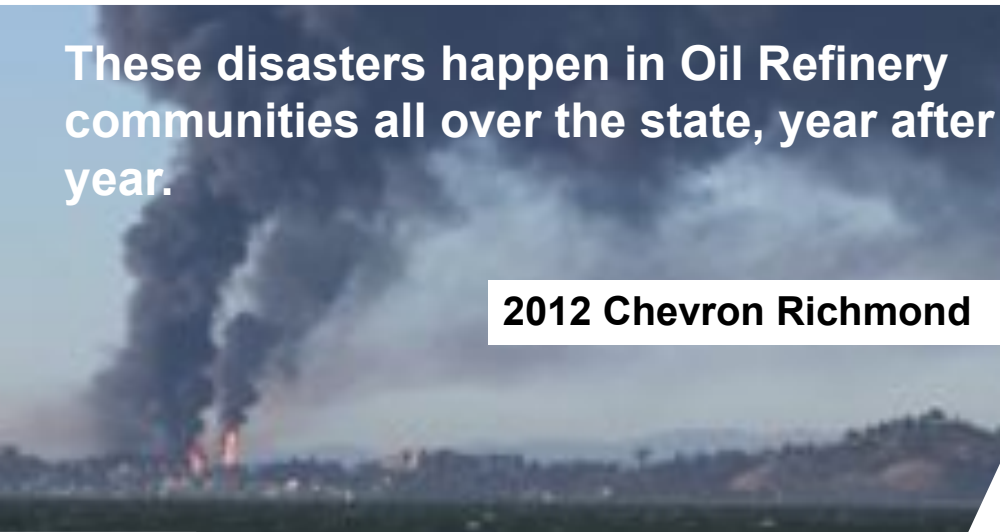


**2015
Torrance**

40 Ton Debris

HF Acid
Settlers

**These disasters happen in Oil Refinery
communities all over the state, year after
year.**



2012 Chevron Richmond



**2023
Marathon
Martinez**

We have some **STATEWIDE** tools – but need beefing up, and the state is not attempting to *regulate* refinery phaseout, just to mitigate impacts

- Clean Air Act & Smog Plans
- SBX1 & ABX21
- The GHG Scoping Plan and other State Policies
- Refinery Safety Policies
- State funding for worker and community transitions



Fossil fuel destruction is far-reaching and heart-breakingly obvious, but let's say it again anyway:

- Thousands die in California due to mobile sources;
- Can't meet Smog standards without phaseout; and
- Climate disasters are alarmingly tragic, only to get worse.



LOCAL ORDINANCES for transition need to be much stronger, with more community and worker input:

- **Phase out polluting land uses** (eg re-adopt LA's Oil Drilling phaseout)
- **Land and water cleanup after phaseout**
- **Polluter Pays into transition funds** (like the Chevron Richmond model)
- **City and County of LA transition ordinances and policies on closure**

COMMUNITIES WANT A CLEAN ECONOMY

- Green energy & good jobs,
- Grocery stores,
- Restaurants,
- Green spaces,
- Adequate housing,
- Clean soil, water, and air,
- Walkable communities,
- Inclusion in decision-making for new projects,
- No polluting projects.

COMMUNITIES FOR A BETTER ENVIRONMENT

established 1978

www.cbecal.org
Huntington Park, Wilmington, Richmond,
East Oakland

QUESTIONS?

