



RCD Regional Ag & Climate Hubs

Elena Bischak, PhD

California Association of Resource Conservation Districts

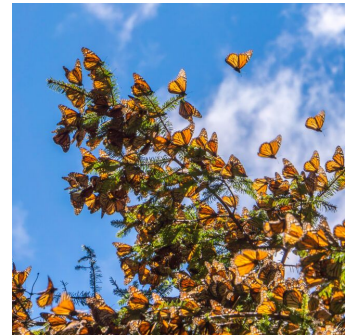
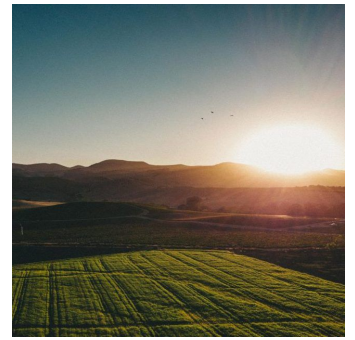
Resource Conservation Districts (RCDs)

Over 85 years of conservation experience

RCDs were founded after the Dust Bowl in the 1930s to bring funding and technical assistance to farmers and ranchers so that they could voluntarily conserve natural resources on their land

Today each RCD's projects and programs are different, and their services often include habitat restoration, forest health, healthy soils, public education, landscape-scale conservation planning, climate resilience, and assisting municipalities and the state in managing water use and preparing for drought and fire.

RCDs always work with their constituents on a voluntary basis — a key reason they are considered a trusted resource in their communities.



RCDs provide technical assistance to meet climate goals

Technical
Assistance
Provided by
Resource
Conservation
Districts

PROJECT MANAGEMENT. RCDs manage grant funding, contractors, project logistics, and implementation monitoring and reporting.

IMPLEMENTATION FUNDING. RCDs leverage grant funding from multiple sources to scale project implementation across multiple landownerships and to meet multiple conservation objectives.

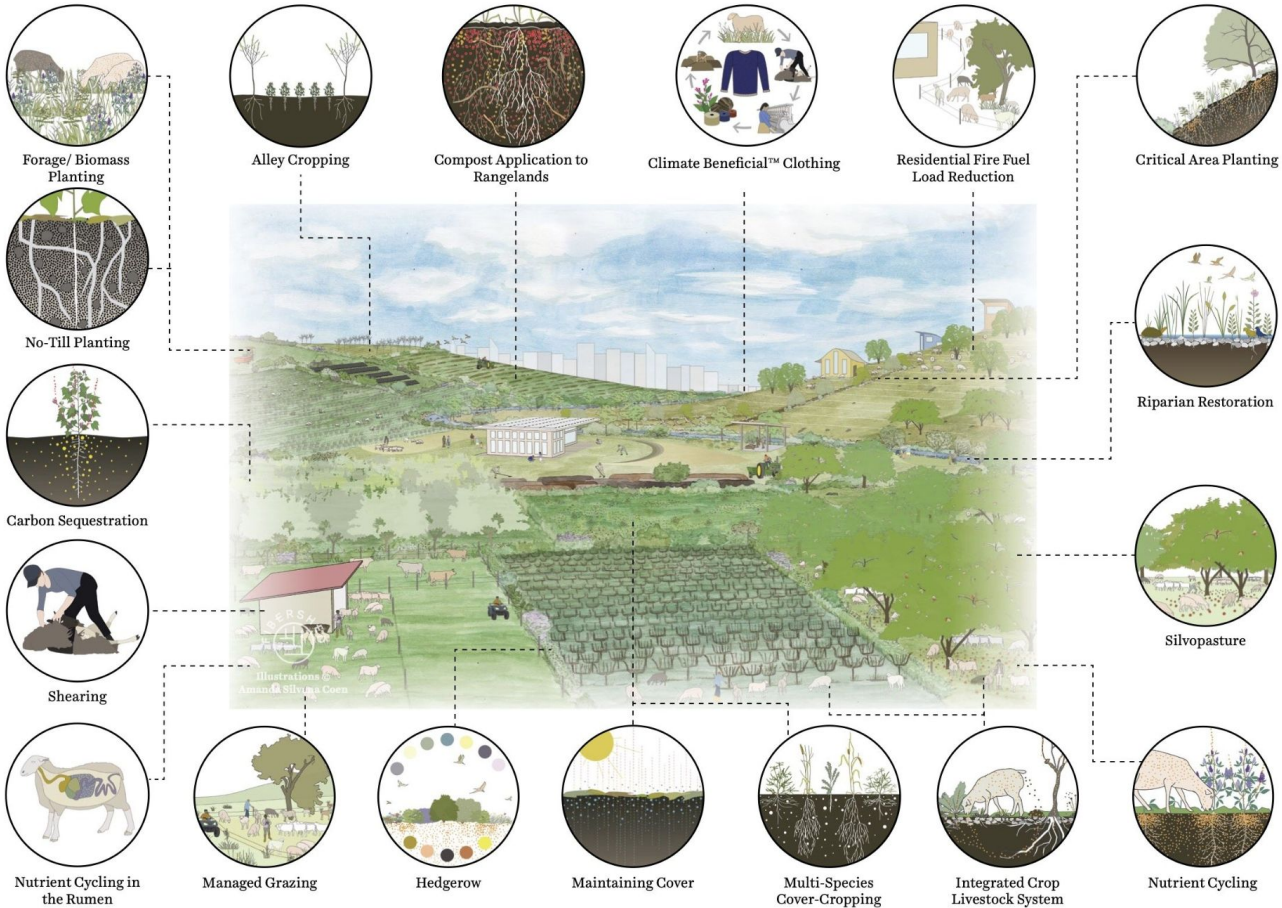
DESIGN & ENGINEERING. RCDs ensure projects are designed to meet practice standards and environmental requirements.

ENVIRONMENTAL COMPLIANCE. RCDs serve as lead agencies for CEQA and coordinate permit applications and cultural resource surveys as needed.

DEVELOPING CONSERVATION PLANS. RCDs work with landowners to develop conservation plans as an educational tool and to increase eligibility for state and federal funding.

BUILDING RELATIONSHIPS AND TRUST. RCDs work one-on-one with landowners to assess natural resources concerns, understand each landowner's unique needs and goals, discuss options, and prioritize actions.

Carbon farming can help mitigate climate change



RCD Regional Ag & Climate Hubs

3 year, \$3M granted in 2023 by the Patterson Family Foundation supports the development of our statewide network of RCD Regional Ag & Climate Hubs dedicated to the advancement of climate-beneficial agriculture through investment in soil health, with a focus on carbon farm planning

Partnership between CARCD, The Climate Center, and the Carbon Cycle Institute

Focused on identifying barriers and solutions to the regional scale of climate-beneficial ag work at RCDs to advocate for policy that leads to more conservation on the ground



CALIFORNIA ASSOCIATION OF
RESOURCE
CONSERVATION DISTRICTS

Carbon Cycle Institute



Elena Bischak
Statewide
Coordinator,
CARCD

elena-bischak@carcd.org



Margot Flynn
Regional
Coordinator,
Sacramento
Valley Regional
Soil Hub

margot@svsoilhub.org



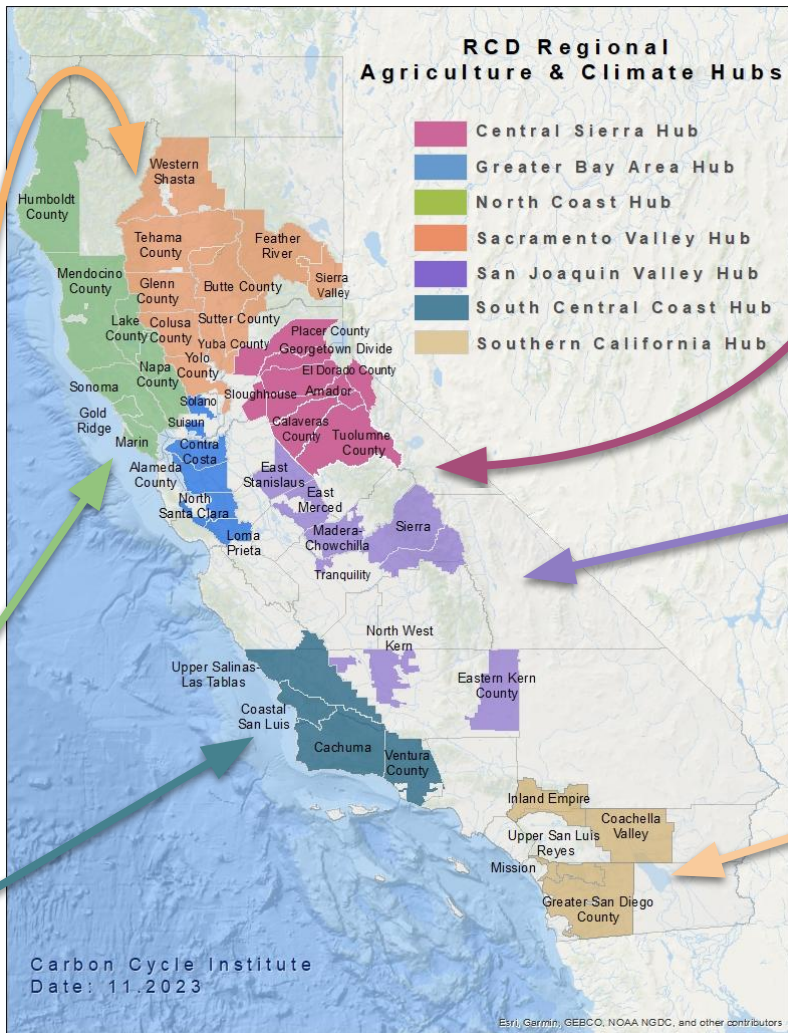
Emilie Winfield
Director,
North Coast
Soil Hub

emilie@marinrcd.org



Joshua Kouri
Regional
Coordinator,
Central Coast
Soil Hub

josh@coastalrcd.org



Matthew Lunn
Regional Coordinator,
Central Sierra
Natural and Working
Lands Hub

Matthew@tcrd.org



Alexandria Miranda
Regional Coordinator,
San Joaquin
Valley Regional
Soil Hub

amiranda@carboncycle.org



Rachel Pettit
Regional
Coordinator,
Southern California
Soil and Water Hub

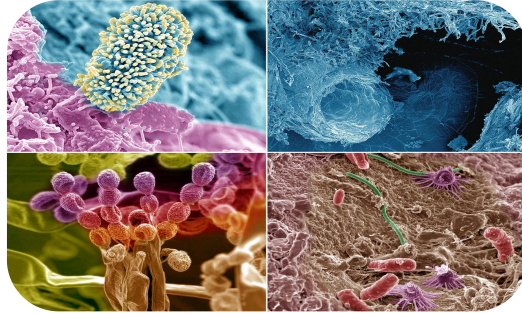
Rachel.Pettit@rcdsandiego.org



Investing in soil has multiple co-benefits



Food security



Biodiversity



Public health



Climate change mitigation

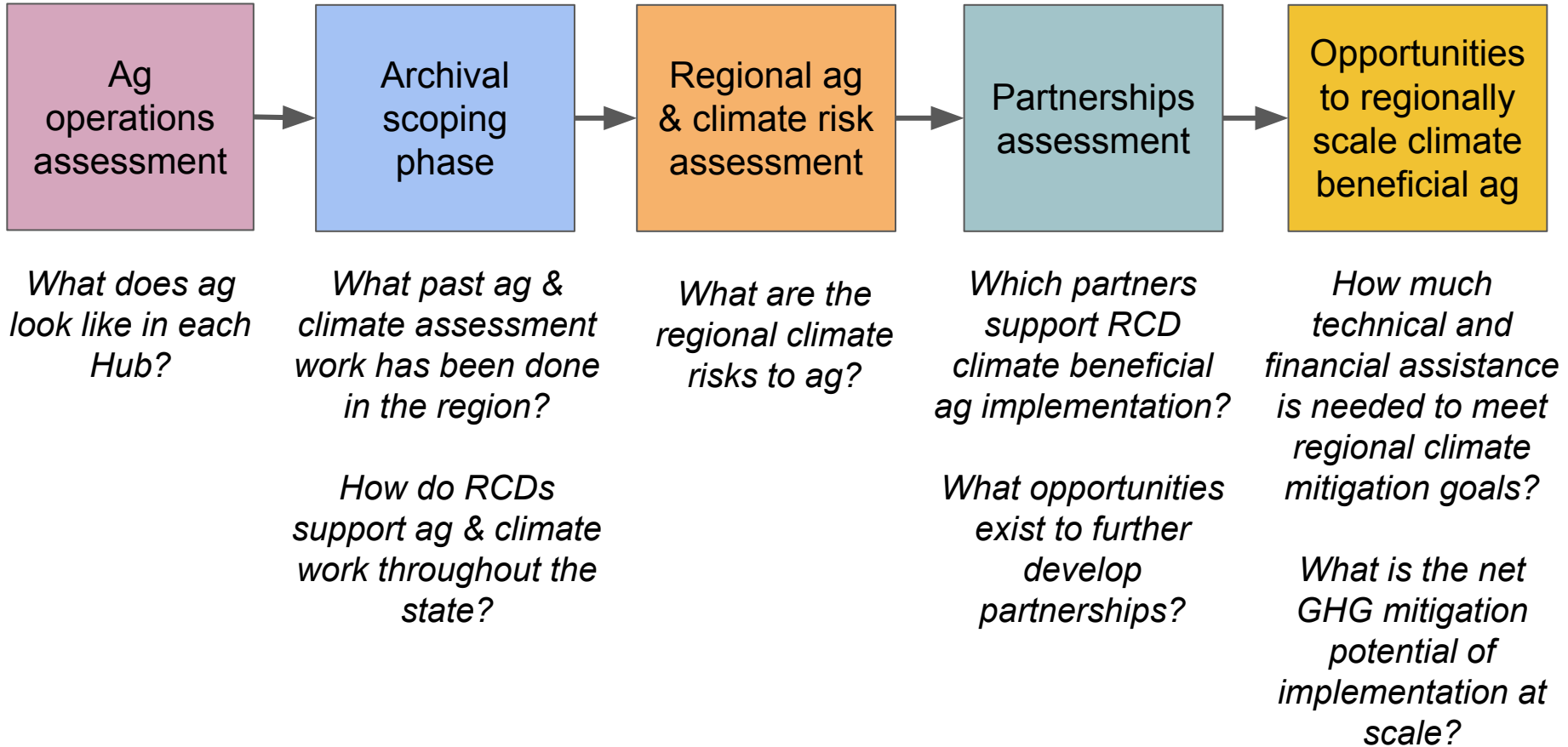


Water conservation



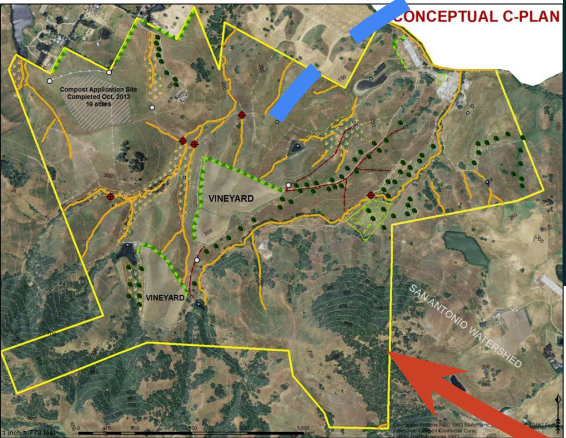
Profit

Hub Regional Needs and Opportunity Assessment

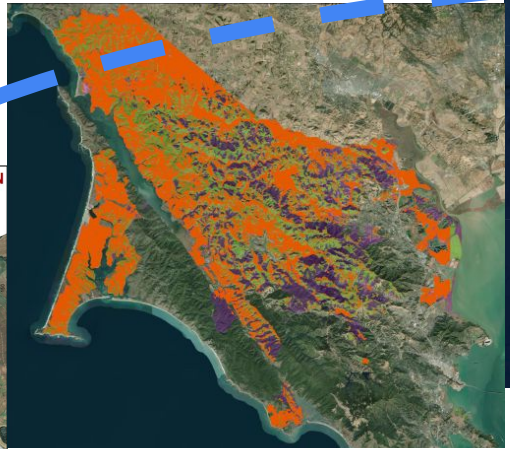


Scales of conservation

Close collaboration between Hubs and their partners are key to informing policy, programs, strategies & targets at the State scale



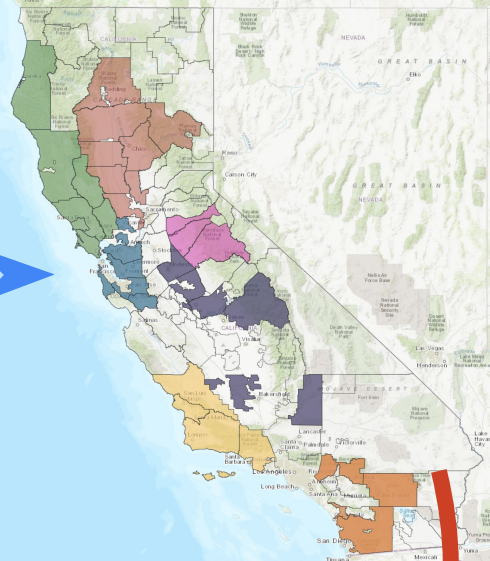
Field and farm scale:
carbon farm planning



Landscape and county
scale: climate action
planning, local policy



Regional: RCD
Regional Ag & Climate
Hub assessments



State scale: policies,
programs, targets

Learn more about our RCD
Regional Ag & Climate Hubs



Please contact me!
elena-bischak@carcd.org

