

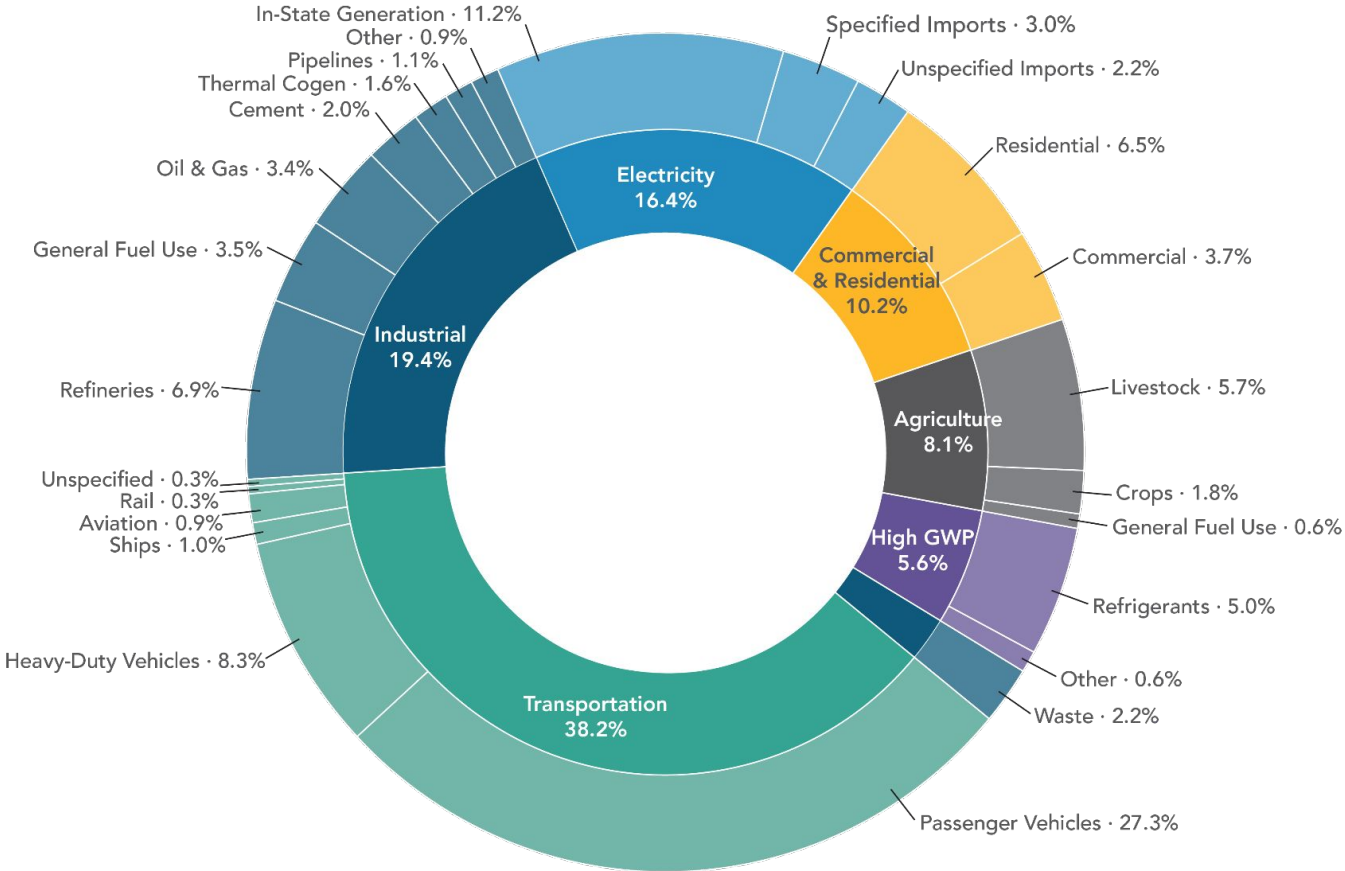


# RCD Regional Ag & Climate Hubs

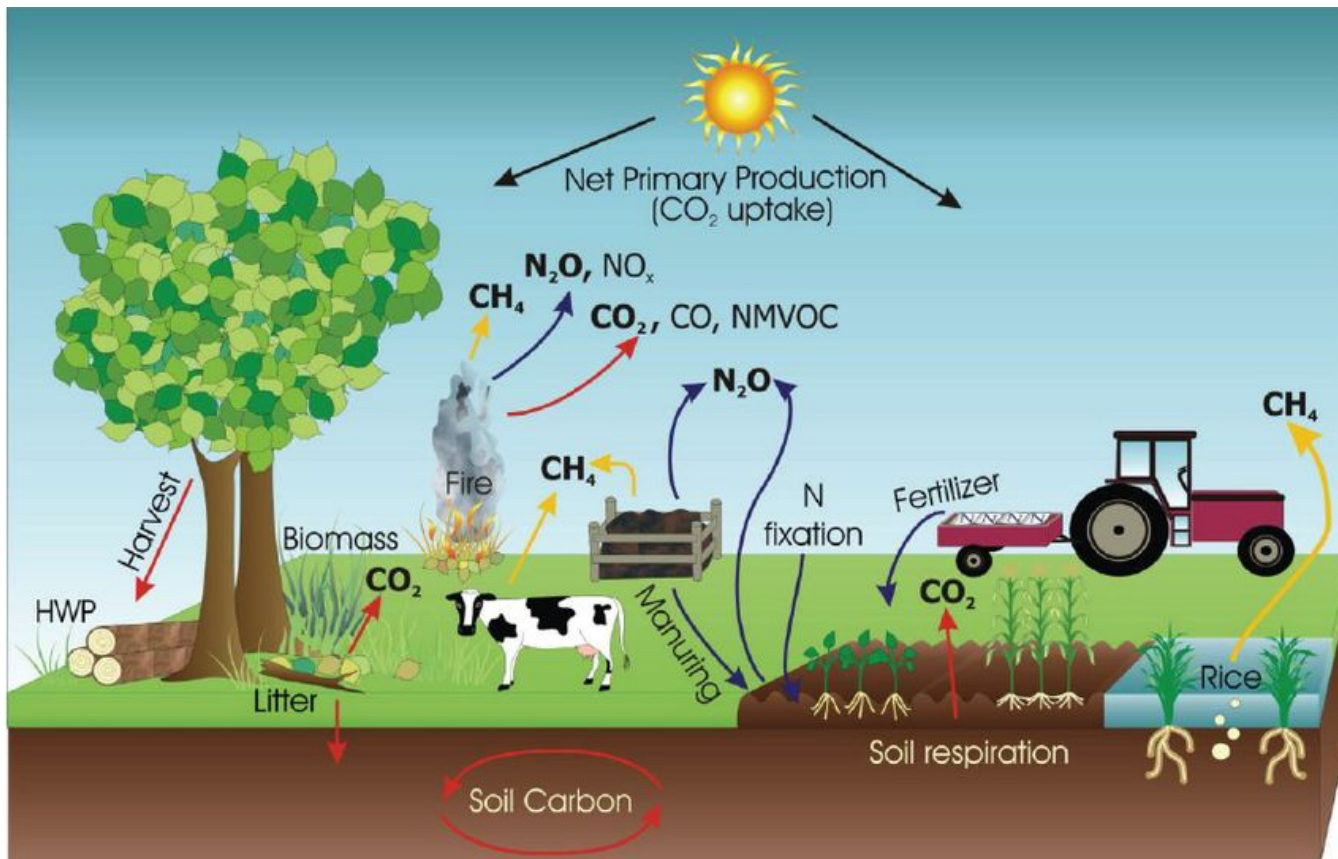
Elena Bischak, PhD

California Association of Resource Conservation Districts

# GHG Emissions from Agriculture in California



# Science behind agricultural climate impacts



“Carbon Sequestration is the process by which atmospheric carbon dioxide is captured and stored in perennial biomass and soils of agricultural, agroforestry and forestry systems.”

USDA NRCS



# Carbon farming can help mitigate climate change



Forage/ Biomass Planting



Alley Cropping



Compost Application to Rangelands



Climate Beneficial™ Clothing



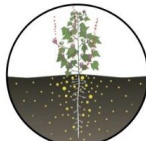
Residential Fire Fuel Load Reduction



Critical Area Planting



No-Till Planting



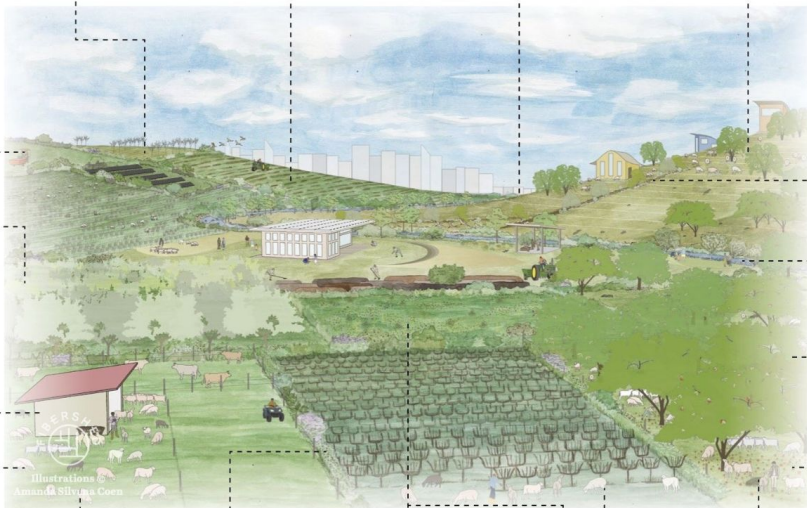
Carbon Sequestration



Shearing



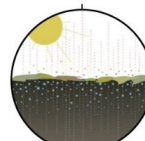
Nutrient Cycling in the Rumen



Managed Grazing



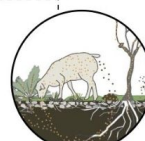
Hedgerow



Maintaining Cover



Multi-Species Cover-Cropping



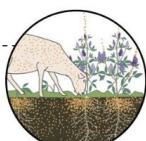
Integrated Crop Livestock System



Riparian Restoration



Silvopasture



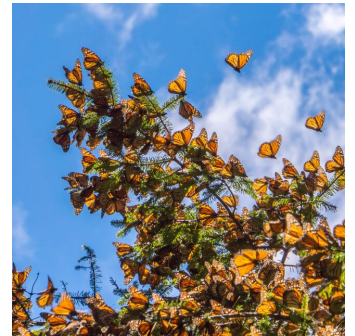
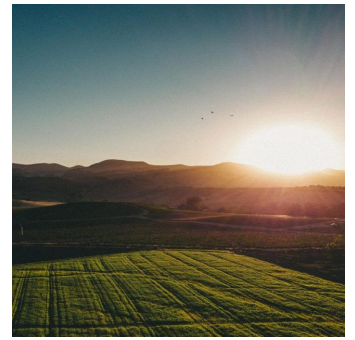
Nutrient Cycling

# Resource Conservation Districts (RCDs)

***Over 85 years of conservation experience***

RCDs work with local communities on a voluntary basis to conserve our natural resources, including soil, water, habitat, and forests on working lands.

95 RCDs across the state are engaged in local conservation.



# RCD Regional Ag & Climate Hubs

3 year, \$3M granted in 2023 by the Patterson Family Foundation supports the development of our statewide network of RCD Regional Ag & Climate Hubs dedicated to the advancement of climate-beneficial agriculture through investment in soil health, with a focus on carbon farm planning

Partnership between CARCD, The Climate Center, and the Carbon Cycle Institute

Focused on identifying barriers and solutions to the regional scale of climate-beneficial ag work at RCDs to advocate for policy that leads to more conservation on the ground



CALIFORNIA ASSOCIATION OF  
**RESOURCE**  
CONSERVATION DISTRICTS

Carbon Cycle Institute







# RCDs provide Technical Assistance

Example Project: Riparian restoration on an 1,800-ft stretch of creek on a family dairy in Sonoma County

RCD leveraged funding from CDFA Healthy Soils Demonstration Project, NRCS Environmental Quality Incentives Program, State Coastal Conservancy, Wildlife Conservation Board, and Organic Valley

RCD developed a carbon farm plan with the landowner and partnered with NRCS on a Comprehensive Nutrient Management Plan

RCD has worked with the landowner for almost 20 years

Monitoring & reporting

Project management

Coordinating funding

Design and engineering

Environmental compliance

Conservation planning

Trusting relationships with farmers

Local planning and program development





# North Coast Soil Hub & Carbon Farming Network

A collaboration between RCDs, USDA Natural Resources Conservation Service and partners in Humboldt, Lake, Marin, Mendocino, Napa, and Sonoma Counties.

Coordinate an inclusive network of farmers and ranchers, technical assistance providers, researchers, educators, and industry representatives dedicated to advancing climate-friendly agriculture in California's North Coast region.

# Core Regional Hub Activities - North Coast Soil Hub



**ADVISE** Provide trusted one-on-one guidance to farmers and ranchers as they seek to make environmentally friendly decisions.

**LEARN & INSPIRE** Host workshops and trainings that facilitate hands-on learning about climate-friendly agriculture, with an emphasis on peer to peer learning.



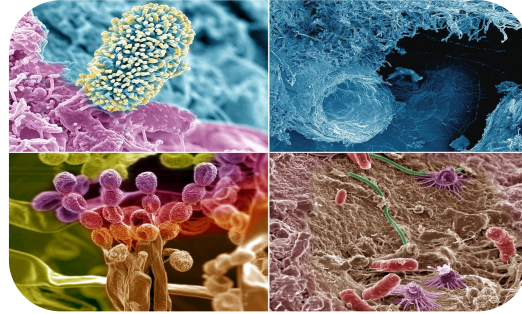
**STUDY, ASSESS & MONITOR** Bring research onto farms to accelerate the development of practical and effective solutions.



# Investing in soil has multiple co-benefits



Food security



Biodiversity



Public health



Climate change mitigation



Water conservation



Profit



Learn more about our RCD  
Regional Ag & Climate Hubs



Please contact me!  
[elena-bischak@carcd.org](mailto:elena-bischak@carcd.org)

