



Better World
Group

CALIFORNIA'S CLEAN TRANSPORTATION REGULATIONS

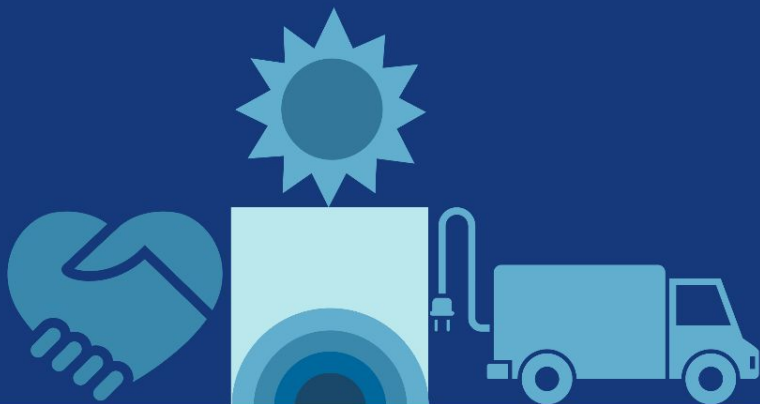


In 2022, the California Air Resources Board (CARB) adopted the historic ACC II rule, requiring the transition to 100% new ZEV sales by 2035.

This month CARB will consider the adoption of two more historic climate and air pollution regulations that will set us on a path to zero combustion for goods movement.



The four components of the ACF rule



01

100% ZEV sales
by 2036

02

Drayage trucks
requirement

03

State & Local
Government
fleets
requirement

04

High Priority and
Federal Fleets

Benefits of ACF

If adopted, ACF will deliver significant public health benefits by requiring public and private fleets to transition from diesel to zero-emission trucks.



Climate & Air Quality

ACF will save CA \$26.5 billion in public health-related benefits.



Workforce

ACF's misclassification provisions will provide overdue labor protections for trucks drivers.



Fleets

Due to ZE trucks' lower operating, maintenance, and fueling costs, ACF is expected to provide net cost savings of \$22.2 billion to fleets statewide.



Environmental Justice

Communities of color are disproportionately exposed to transportation pollutants linked to increased illness and death from heart and lung disease.



In-Use Locomotive Rule

The Locomotive Rule will require all locomotives (freight and passenger) operating in California to transition to zero emission.

Benefits of the In-Use Locomotive Rule



Climate & Air Pollution

The In-Use Locomotive Rule is expected to reduce:

- 390,000 tons of NOx emissions
- 7,500 tons of PM2.5 emissions
- Nearly 22 million metric tons of greenhouse gas emissions.

Public Health

The In-Use Locomotive Rule will prevent

- 3,233 premature deaths
- 1,486 emergency room visits
- More than 1,000 hospital admissions for respiratory and cardiovascular illnesses.

The rule will provide about \$32 billion in statewide health benefits.

The Locomotive Regulation has five components:

- 1 Spending account - operators must set aside funds to pay for their ZE investments (starting in 2024)
- 2 Retire old locomotives & replace with ZE - locomotives must be less than 23 y/o in CA (starting in 2030)
- 3 Idling requirement - no idling for more than 30 min, with some exemptions (starting in 2024)
- 4 Recordkeeping & recording requirements - locomotives operating in CA must register with CARB and report on certain activities (starting in 2024)
- 5 Flexibility options - alternatives, extensions and exemptions



Funding Sources

ADVANCED CLEAN FLEETS

- Inflation Reduction Act's Qualified Commercial Clean Vehicle Credit, Alternative Fuel Vehicle Refueling Property Tax Credit
- Bipartisan Infrastructure Law

IN-USE LOCOMOTIVE

- Inflation Reduction Act
- Consolidated Appropriations Act
- Clean Off Road Equipment Voucher
- Clean Transportation Incentives
- ZE Transportation Manufacturing
- Innovative Hydrogen Fueling Solutions for Heavy Transport

ADVANCED CLEAN CARS II

- Federal tax credit
- Clean Vehicle Rebate Project
- Clean Fuels Rewards

Income-eligible incentive programs:

- Clean Vehicle Assistance Program
 - Clean Cars 4 All
-



Better World
Group

Thank you

Contact

ruben@betterworldgroup.com

TRUCK CLASSES COVERED BY ACF



CLASS 2B-3

GVWR: 8,501-14,000 lbs

- Cargo van
- Full size + heavy-duty pickup truck
- City delivery truck
- Minivan



CLASS 4-8

GVWR: 12,001 lbs +

- Large walk-in truck
- Beverage truck
- School Bus
- Single-axle



CLASS 7-8 TRACTORS

GVWR: 26,001 lbs +

- Refuse trucks
- City Transit Bus
- Big rigs
- Cement trucks