



# Chief Heat Officer & CEMO Director



**Marta A. Segura, MPH**  
Chief Heat Officer & CEMO Director  
Climate Emergency Mobilization Office (CEMO)  
City of Los Angeles

*We catalyze collaborative, equitable climate & extreme heat policies and co-create community climate resilience for thriving, healthy communities for all of Los Angeles.*



# Resilience Hubs & Social Cohesion



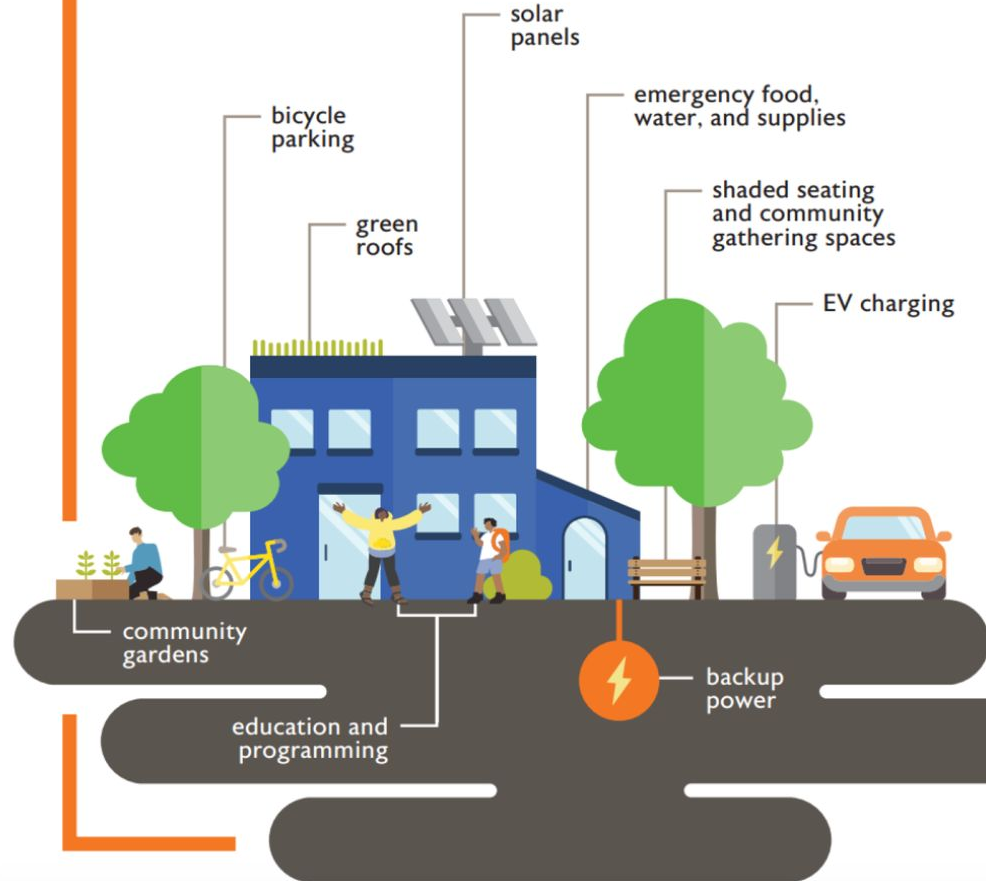
Our Heat Action Plan will include a plan to increase resilience hubs/cooling centers in disadvantaged communities. However, the **key element for all resilience hubs is Social Cohesion**, created by ongoing services and programs for the community.

Our City's Recreation and Parks facilities and Libraries serve as excellent channels of communication and outreach, and have worked to create programming and social cohesion as a priority. There is established trust, and people know these places as a refuge from harm. There are also community-based organizations (CBOs) that are models for social cohesion and resilience building in communities that would be excellent Resilience Hubs. However, we need improvements for both.

# What goes into a Resilience Hub?



## What might I find at a Resilience Hub?






**Agency-Owned**  
(City, AISD, County)

**+**


**Agency  
Operated**



**Agency-Owned**  
(City, AISD, County)

**+**

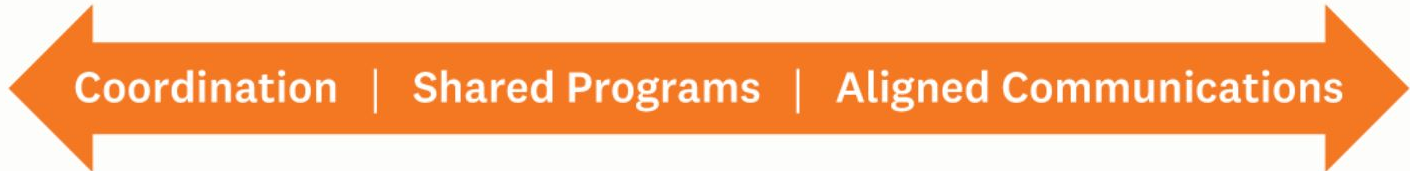
**Community  
Programmed**



**Community-Owned**  
(Churches, Businesses, Non-Profits)

**+**

**Community  
Operated**





# Extreme Heat: LA's #1 Climate Hazard



## **Extreme Heat is LA's Primary Climate Hazard & Resilience Hubs should primarily serve as Cooling Centers to save the most lives during Heat Waves**

- **Research also shows that Cooling Centers have saved lives and avoided hospitalizations for the most disadvantaged urban areas as a refuge from Extreme Heat and the stagnated pollution that comes with it in urban settings.** 4 hours of respite in a cooling center is on average what is needed to keep our community members safe. Thus, these for the most part don't require 24-hour shelters.
- **UCLA Heat Risk Map, Cool Spots LA Digital Map, and UCLA Mobile Tracking Research of Cooling Centers**
- **California's Resilience Hub Funding and Resources should prioritize extreme heat, as this is the most efficient and effective way to save lives.** Extreme heat is LA's primary climate hazard because it causes the greatest harm, hospitalization, and death. With the UCLA Heat Risk Map, we can now demonstrate that with the excess deaths and hospitalizations measured during the last 10 years of Heat Waves.



# Extreme Heat & Climate Resilience



- In the City of LA, our Climate Emergency Mobilization Office (CEMO) engages frontline communities through many channels to include ***their voice in policy*** and **decision-making**. They have prioritized Extreme heat.
- Both City-run resilience hubs and those managed by nonprofits should be funded to meet the needs of the most impacted by Extreme heat, the communities that are historically disinvested. (based on models provided in graphic above)
- Many existing cooling centers/resilience hubs, are year-round community centers, and require retrofits to ensure that during blackouts, we can provide refuge for multiple adverse weather conditions and emergencies.



# Call to Action



## Call to Action:

- **A statewide unified approach for funding Cities should prioritize the retrofit of cooling centers, that serve as resilience hubs in disadvantaged areas, and the willing and capable non-profit organizations too.** The City and non-profits must work as partners to prepare & increase awareness of extreme heat & climate hazards for frontline, pollution-burdened communities with historical disinvestment.
- In times of extreme heat, Cities should serve as the communications hub for all resilience hubs throughout the City to ensure we have the deployment of resources where they are most needed.
- **The Federal, State, and local governments should align to expand engagement and funding for frontline communities** to both increase the capacity to serve as resilience hubs and cooling centers, and build awareness on preventing the dangers of the Heat Season, to avoid harm to their communities.
- **The State should facilitate the funding of Resilience/Cooling Hubs run by Cities and Nonprofits alike, and the research shows they don't need to be 24 hour shelters.** Our bodies can recover from Extreme Heat with a few hours of cool and thermally comfortable air.





# Relevant Reports & Resources



Climate Equity LA Series  
Part 2: Equitable and  
Community-Driven  
Climate Resilience in Los Angeles  
Public Workshop Series  
(April 2022)



## Report on Equitable Building Decarbonization

*Equity Focused Policy Recommendations  
for the City of Los Angeles*

Prepared for the Climate Emergency Mobilization Commission  
and the Climate Emergency Mobilization Office

FINAL REPORT  
September 15, 2022



- [Climate Equity LA Series: Equitable and Community-Driven Climate Resilience in LA](#)
- [CEMO Report on Equitable Building Decarbonization](#)
- [Cool Spots LA App](#)
- [UCLA Heat Risk Map](#)
- [Community Driven Climate Resilience Planning: A Framework \(NACRP\)](#)



Thank you!  
*¡Gracias!*



**MARTA A. SEGURA, M.P.H.**

Chief Heat Officer & Director of Climate Emergency Mobilization  
Executive Director, Climate Emergency Mobilization Commission (CEMC)  
Board of Public Works • City of Los Angeles

**CLIMATE EMERGENCY MOBILIZATION OFFICE (CEMO)**

Board of Public Works • City of Los Angeles

[climate4la.org](http://climate4la.org)

[CEMO-Office@lacity.org](mailto:CEMO-Office@lacity.org)