

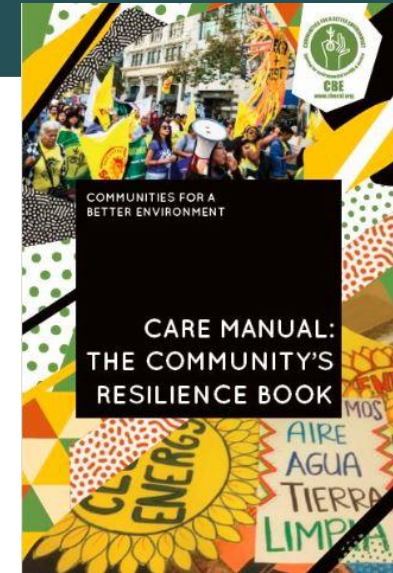
COMMUNITIES
FOR A BETTER
ENVIRONMENT
established 1978

Founded in 1978, **Communities for a Better Environment (CBE)** is one of the preeminent environmental justice organizations in the nation. The mission of CBE is to build people's power in California's communities of color and low income communities to achieve environmental health and justice by **preventing and reducing pollution and building green, healthy and sustainable communities and environments.**

CBE provides residents in heavily polluted urban communities in California with **organizing skills, leadership training and legal, scientific and technical assistance**, so that they can successfully confront threats to their health and well-being.

Wilmington- Los Angeles, CA

- Cumulative impacts from:
 - 5 refineries
 - Refinery by-product industry
 - ~300 oil drilling sites
 - Port of Los Angeles
 - Diesel trucks
 - Metal dismantlers
 - Gentrification
 - Displacement
 - Lack of representation



Community Engagement



Coordinate with Center

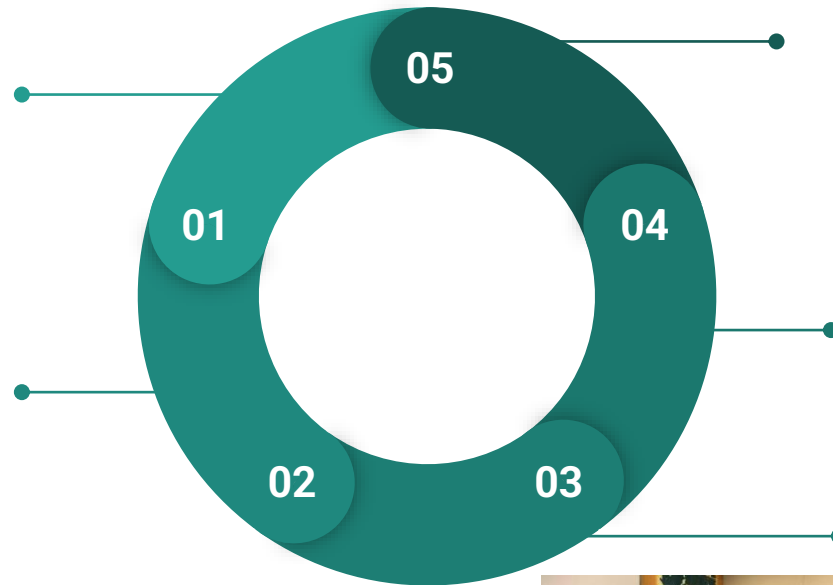
- Share findings
- Ground truth electrical load
- Meet with new sites
- Identify resources
- Educate City Officials
- Begin Resilience Hub Network

Internal Education

- Staff Training
- Curriculum Building

Ground-truthing

- Member Training
- Curriculum Building

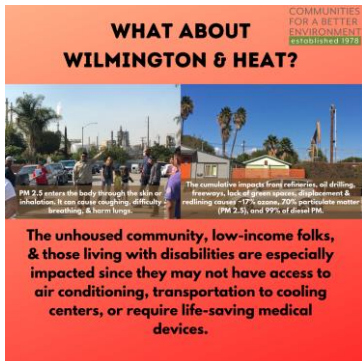


Data Input

- Gather results
- Summarized in presentations
- Created out-facing communications content

Resilience Squad

- Team of 4-6 canvassers
- Training
- Drafted Survey
- Presented/ received feedback from membership
- Planned outreach
- Collected surveys



Community needs & priorities: Survey Results

Demographics:

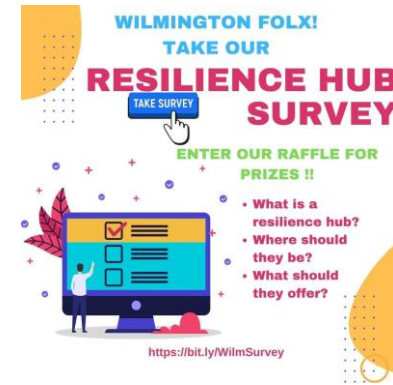
- Ages
 - 12-30 (35%)
 - 31-50 (40%)
 - <50 (25%)
- 77% had dependents
 - Avg: 4 people, Min: 2, Max:7
- Proximity to industry
 - 19% adjacent
 - 44% < 1 mile
 - 36% ~ 5 miles
- 22% Immunocompromised

Other considerations:

- During power outage- Avg: 73 min
 - Min: immediately, Max: 3 hours

Top climate event concerns:

1. Earthquakes
2. Air Pollution
3. Refinery Flaring
4. Wildfires
5. Extreme Heat
6. Oil Drilling
7. Water/Food Insecurity
8. Drought
9. Tsunami
10. Power Outages
11. Vector Borne Diseases
12. Flooding



Where to go during emergency

- Yes-Trust
- Family
- Public Services
- Community
- No



In a Center: Resilience Hub

- Solar power and storage
- Wi-Fi
- AC and air filtrations
- Friendly staff
- Charging stations
- Food and water
- First aid supplies
- Support to financial resources



In Community: Mutual Aid

- Food drives
- Resilience kits
 - First aid, PPE
- First aid training
- Clothing drives
- Distributing box fans and air filters



Wilmington Senior Center

- Identified through community visioning
- Transportation, programming, food distribution available
- Installation completed 2021
- ~100-panel system installation
- Back-up energy potential ~2 days



Tzu Chi Clinic

- Health and wellness programming, acupuncture, food distribution available
- Currently in design process
- Funding for storage is pending
- Outreach and transportation plan in practice

