



CCAs and Energy Resilience

RCEA's Airport Microgrid Partnership

Presentation for
Clean Power Exchange
April 17, 2019



REDWOOD COAST
EnergyAuthority



Outline

- Background on RCEA and its CCA program
- Project overview
- Project funding
- Project partners
- Value of the project to RCEA as a CCA

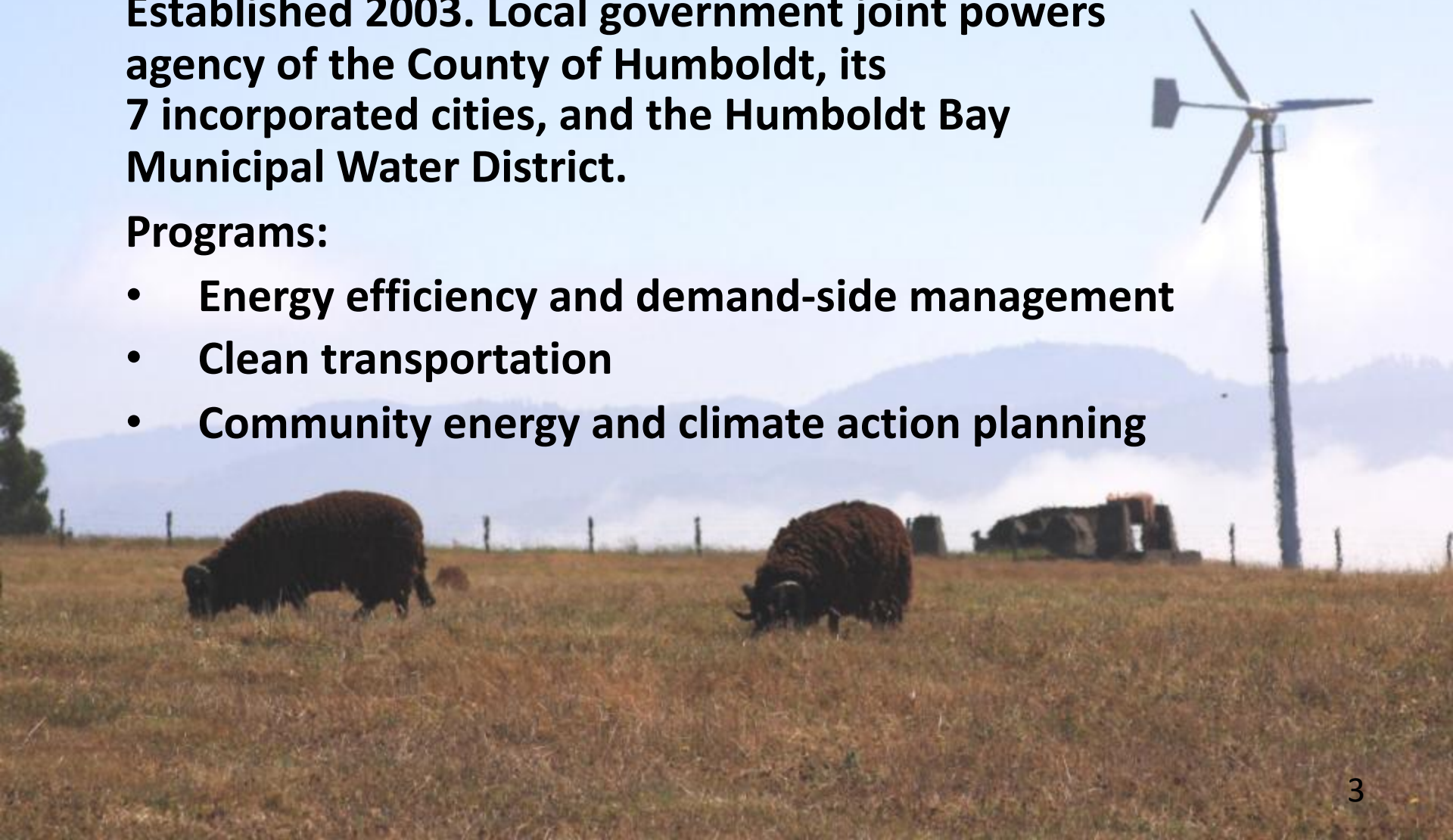


REDWOOD COAST
EnergyAuthority

Established 2003. Local government joint powers agency of the County of Humboldt, its 7 incorporated cities, and the Humboldt Bay Municipal Water District.

Programs:

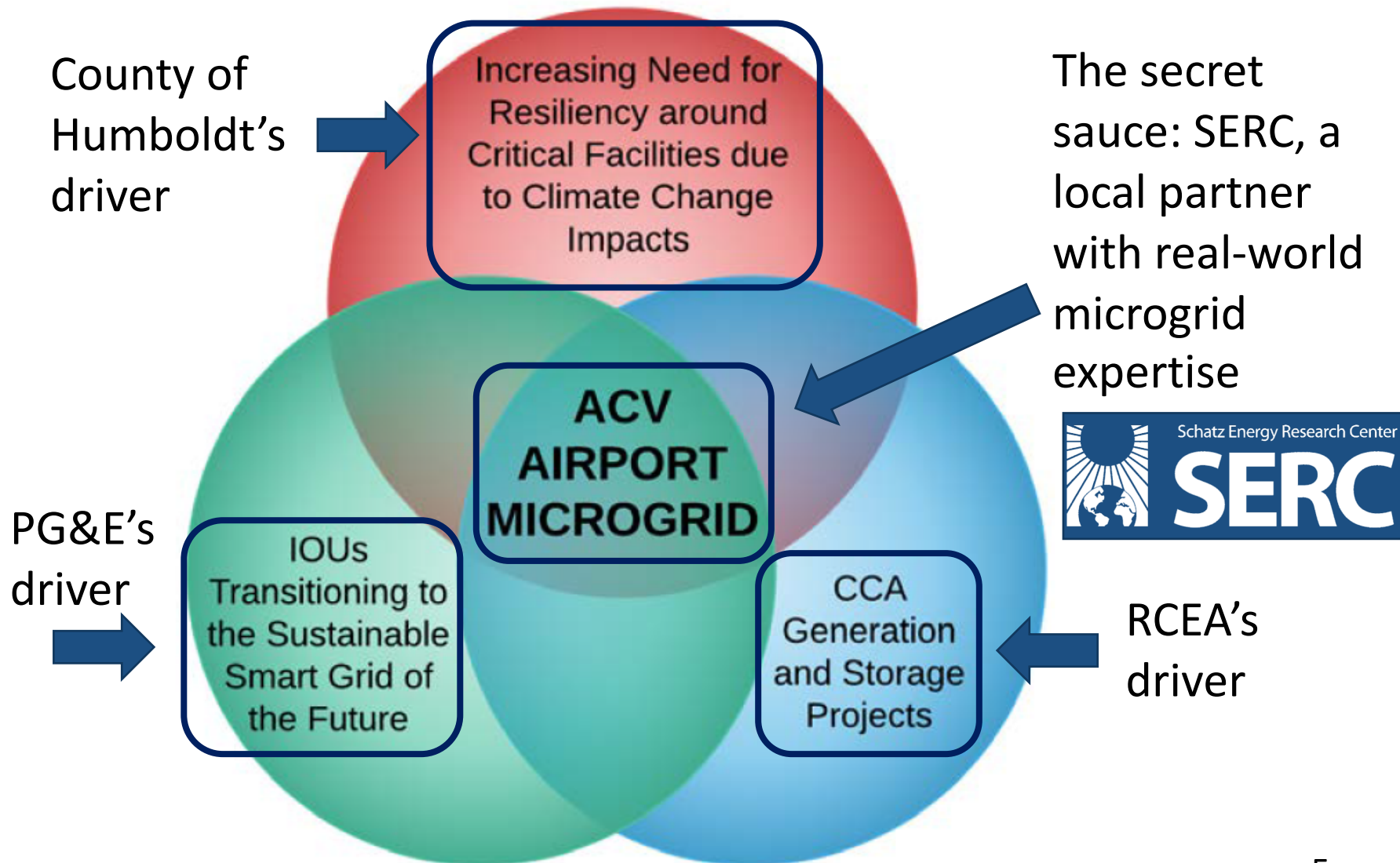
- **Energy efficiency and demand-side management**
- **Clean transportation**
- **Community energy and climate action planning**



RCEA's Community Choice Energy Program

- Launched May 2017 (7th CCA in CA)
- 93% participation rate
- Base program 40% renewable; 100% renewable option
- 700 GWh/yr load, 130 MW peak
- Board objective: maximize local renewables while keeping rates competitive with PG&E
- Portfolio includes PPAs with local biomass plants using waste from local forest products mills
- Balance of portfolio is short-term procurement from various western states resources
- Issued RFP in February for long-term renewables contracts; currently evaluating responses

Origins of the Airport Microgrid



ACV Airport Microgrid Project



- Will serve 18 PG&E electric accounts (most are CCA participants)
- Distribution infrastructure owned, operated, and maintained by PG&E
- 2 MW Solar and 2 MW/8 MWh battery owned and operated by RCEA
- Existing generators at ACV and USCG will still provide back-up
- Cost: \$5M from CEC plus \$6M cost share from RCEA
- Cost share contributions from other partners

Project Partners



Schatz Energy Research Center

SERC

HUMBOLDT
STATE UNIVERSITY



SCHWEITZER
ENGINEERING
LABORATORIES



Partial funding provided by the California Energy Commission

What's the Value Proposition for RCEA?



- With EPIC grant from CEC, net cost to RCEA is well below market
- Learning experience for RCEA and Humboldt County in developing a portfolio of local, utility-scale renewable energy resources (local biomass plants built in the 1980s are the only examples to date)
- Fully meets RCEA's energy storage mandate under AB 2514 for the foreseeable future
- Partially fulfills SB 350 mandate for load-serving entities to own or have under long-term contract 65% of their required RPS resources

An aerial photograph taken from the perspective of someone on a plane, looking out over a coastal landscape. The top of the frame shows the underside of the plane's wing and a small circular light. Below the wing, a long, straight runway with white markings stretches across the middle of the image. To the left of the runway, there's a small town or village with houses and trees. To the right, a sandy beach meets the ocean, with waves breaking onto the shore. The sky is clear and blue.

Thank you



Richard Engel • (707) 269-1700 • rengel@redwoodenergy.org