

Extreme Heat: Impact on the Community



Irene Calimlim

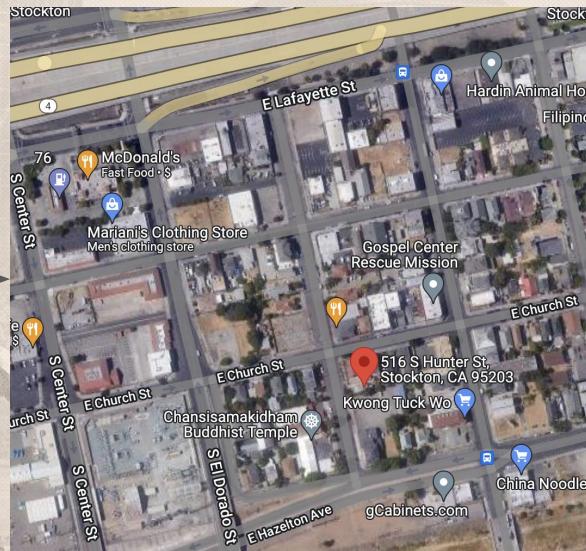


***Little Manila* RISING**
STOCKTON, CA | REMEMBER & RECLAIM

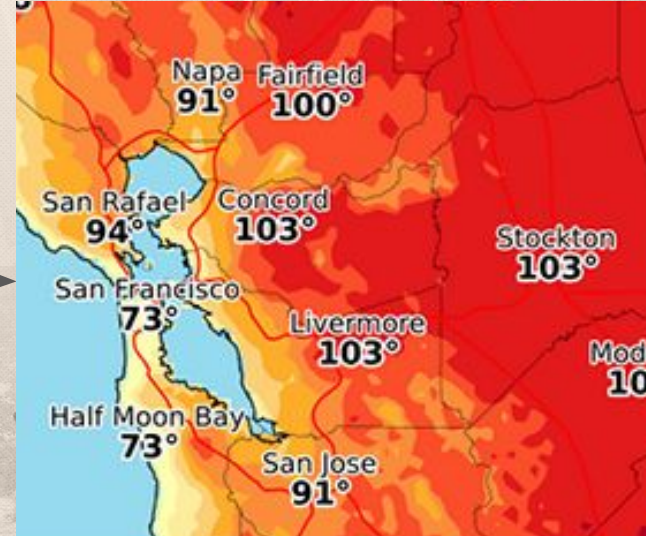
Extreme Heat Experience in Stockton



July 1999



High 102.0 F



**11 days extreme
heat**

Heat Island Effect

An urban heat island occurs when a city experiences much warmer temperatures than nearby areas. The difference in temperature is caused by impervious surfaces such as concrete sidewalks, plus lack of tree cover.

1999:
11 days
HT: 108

2020:
31 days
HT: 113

ENVIRONMENT

'Heat islands' burden poorer residents

One Stockton neighborhood up to 3 degrees warmer

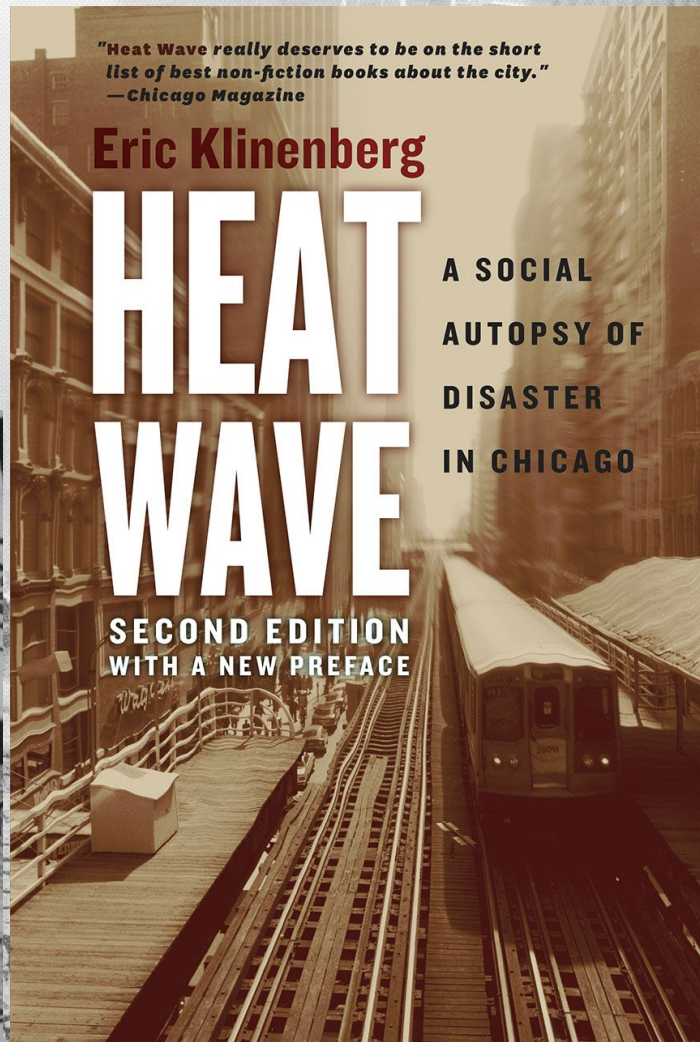
Alex Breitler The Record

Published 6:26 p.m. PT July 27, 2016 | Updated 6:26 p.m. PT July 27, 2016

[View Comments](#)



Worse Case Scenario: Chicago Heat Wave



Youth Advocates: Concerns About Heat



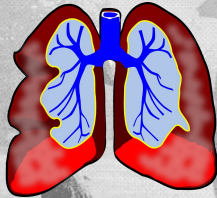
Asthma & allergy
flare ups



Heat
Stroke



Dehydration



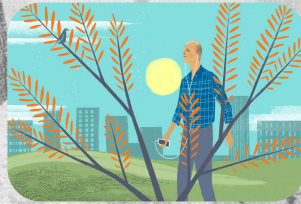
Respiratory
problems



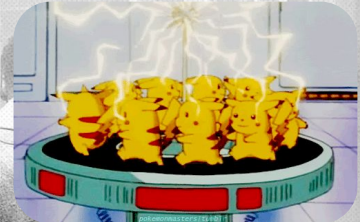
People who use public
transit



Impacts to outdoor
workers



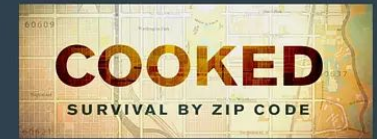
Mental health impact



PGE / electricity impact

LMR YOUTH ADVOCATES PRESENTS:

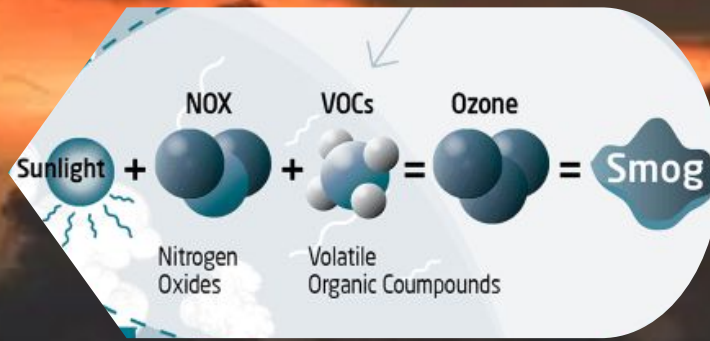
SCREENING + DISCUSSION



JOIN US AS WE OBSERVE THE EFFECTS
BETWEEN REDLINING & PUBLIC HEALTH
AND EXPLORE POSSIBLE SOLUTIONS
FOR CREATING A SUSTAINABLE WORLD

Wed 2/9 5pm-7pm PST | Zoom
CLICK THE LINK IN THE BIO TO
REGISTER OR REGISTER HERE ->
[TINYURL.COM/EJFILM](https://tinyurl.com/EJFILM)





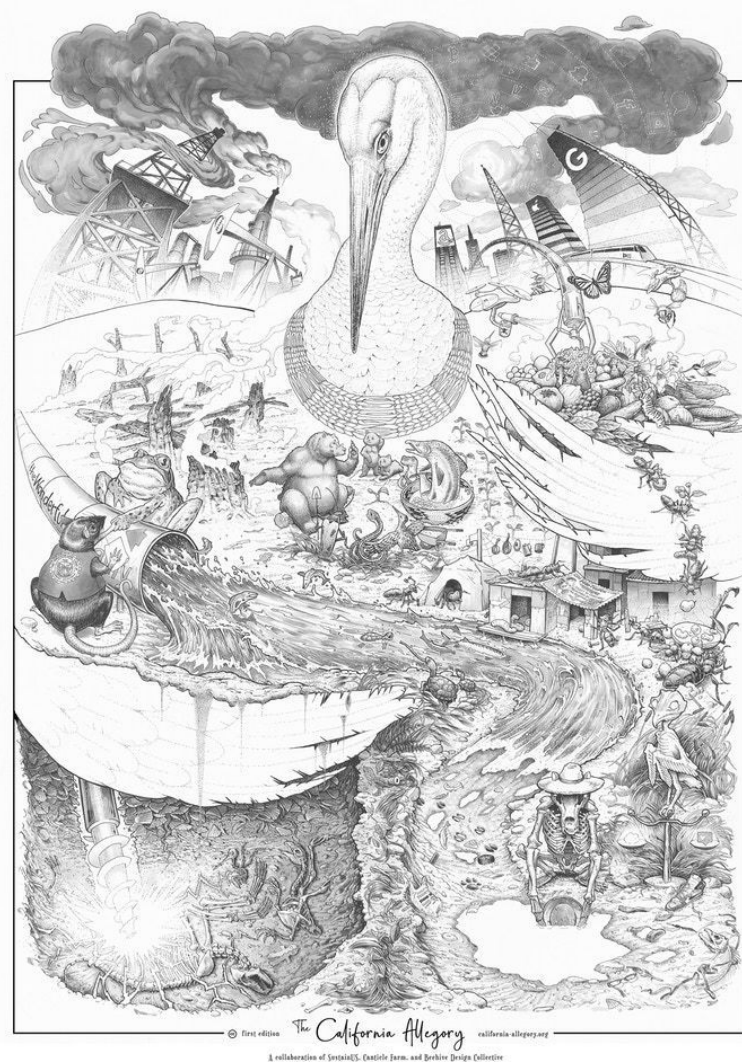
Air Quality



**Water
Quality**



Drought



Electricity & Energy Impact

DEVELOPING
STORY

Pending Power Crisis

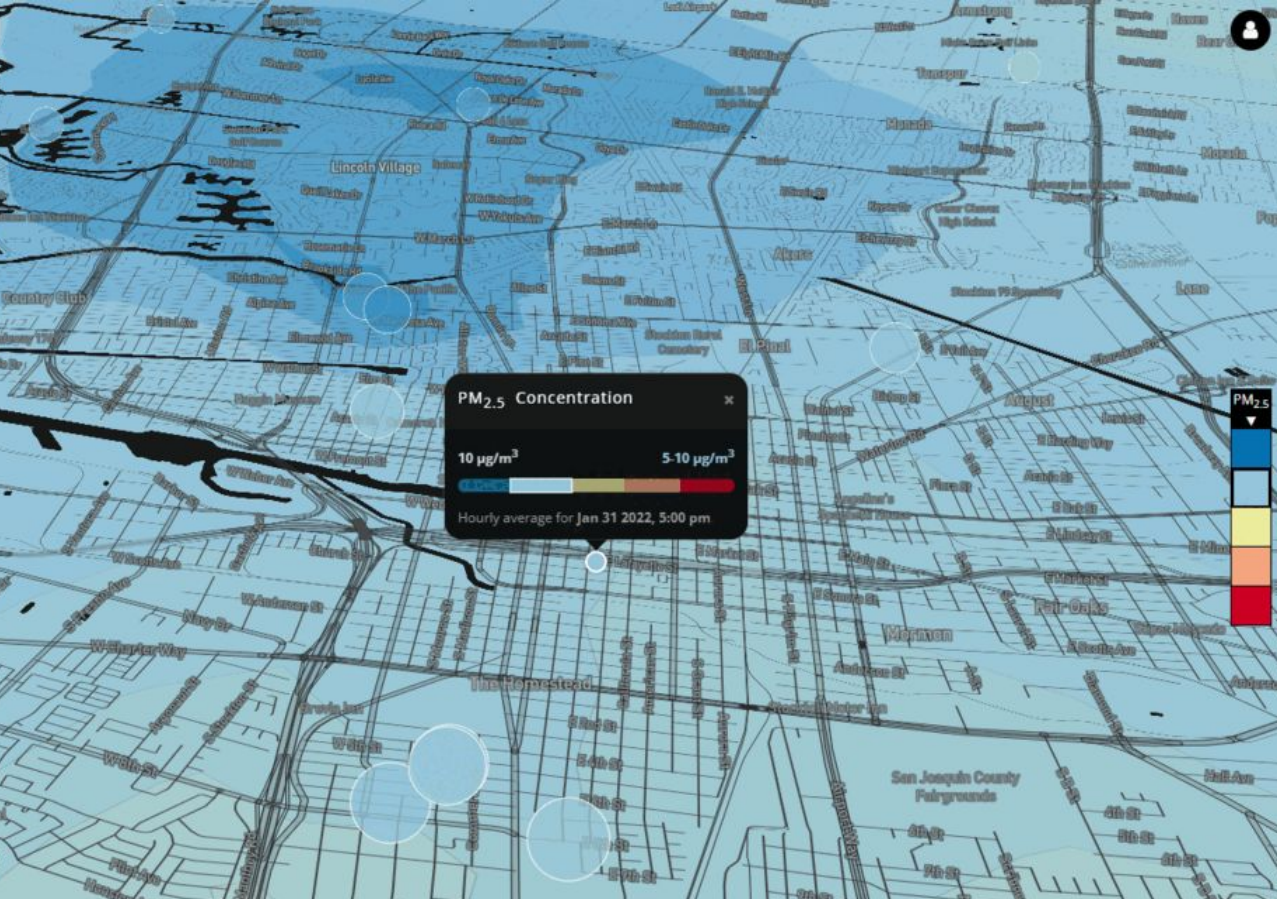


A grayscale photograph of a park scene. In the foreground, a man in a tank top and shorts is walking away from the camera on a cobblestone path. To his right, a person is sitting on the ground, resting. Several other people are walking in the background. The background features tall city buildings and trees. A bright yellow banner is overlaid across the middle of the image, containing the title in bold black text.

Little Manila Rising's Efforts



**Transformative Climate Communities /
Urban Forestry**



AB617 / Stockton Skywatch



Climate Resiliency Efforts

THANK YOU

Irene Calimlim - irene@littlemanila.org

Website: littlemanila.org



: [@littlemanilastockton](https://www.instagram.com/littlemanilastockton)



: [@littlemanila](https://twitter.com/littlemanila)