

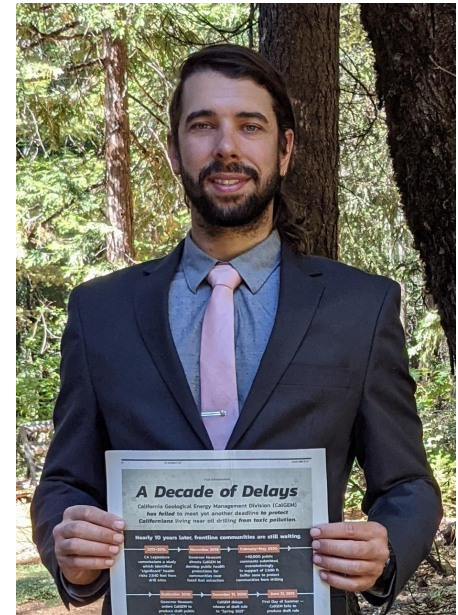
Breakout 1: Oil and Gas Extraction

**Prioritizing public health and safety in a
managed phase out of oil and gas
extraction in California**

Martha Dina Arguello, PSR-LA



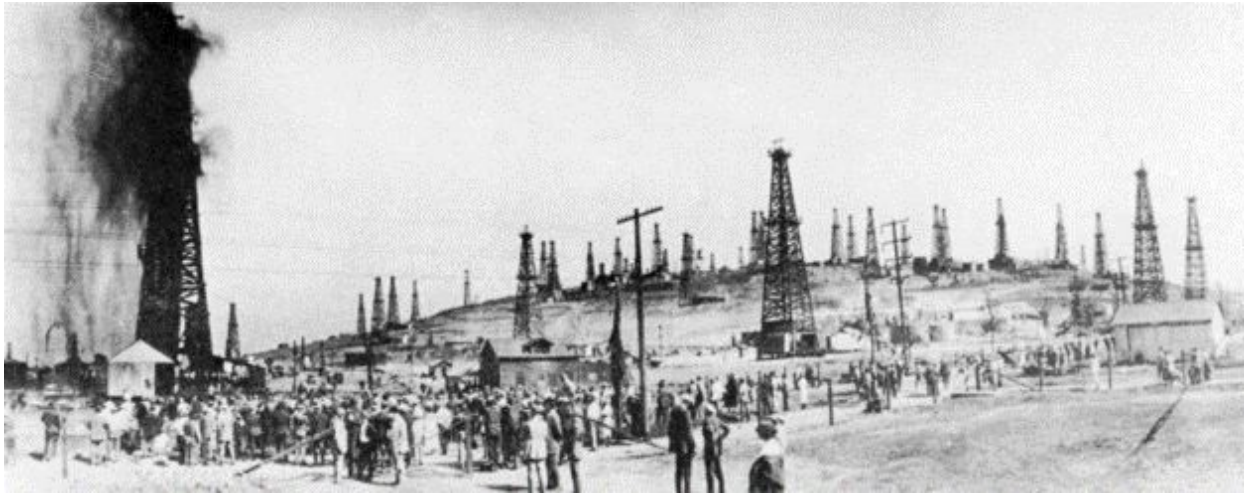
Monica Embrey, Sierra Club



Kyle Ferrar, Fracktracker

Intro to Oil & Gas Extraction

Los Angeles has
a long history
with oil
production.



Then...



Oil wells along Huntington Beach. Courtesy of the Orange County Archives.

Now



Concentration of Oil and Gas Drilling in Black Neighborhoods Is Deliberate, Study Suggests

Researchers found “a clear pattern” in the impacts of racist housing policies on pollution and negative health outcomes in Black communities.



AM

Adam Mahoney

9:00 AM EDT on Apr 15, 2022



A recent study found that formerly redlined communities are home to roughly twice as many oil and gas drilling sites as non-redlined, predominantly white communities. (Jae C. Hong/Associated Press)



[Background](#) [Who We Are](#) [SB 467](#) [Press](#) [Resources](#)

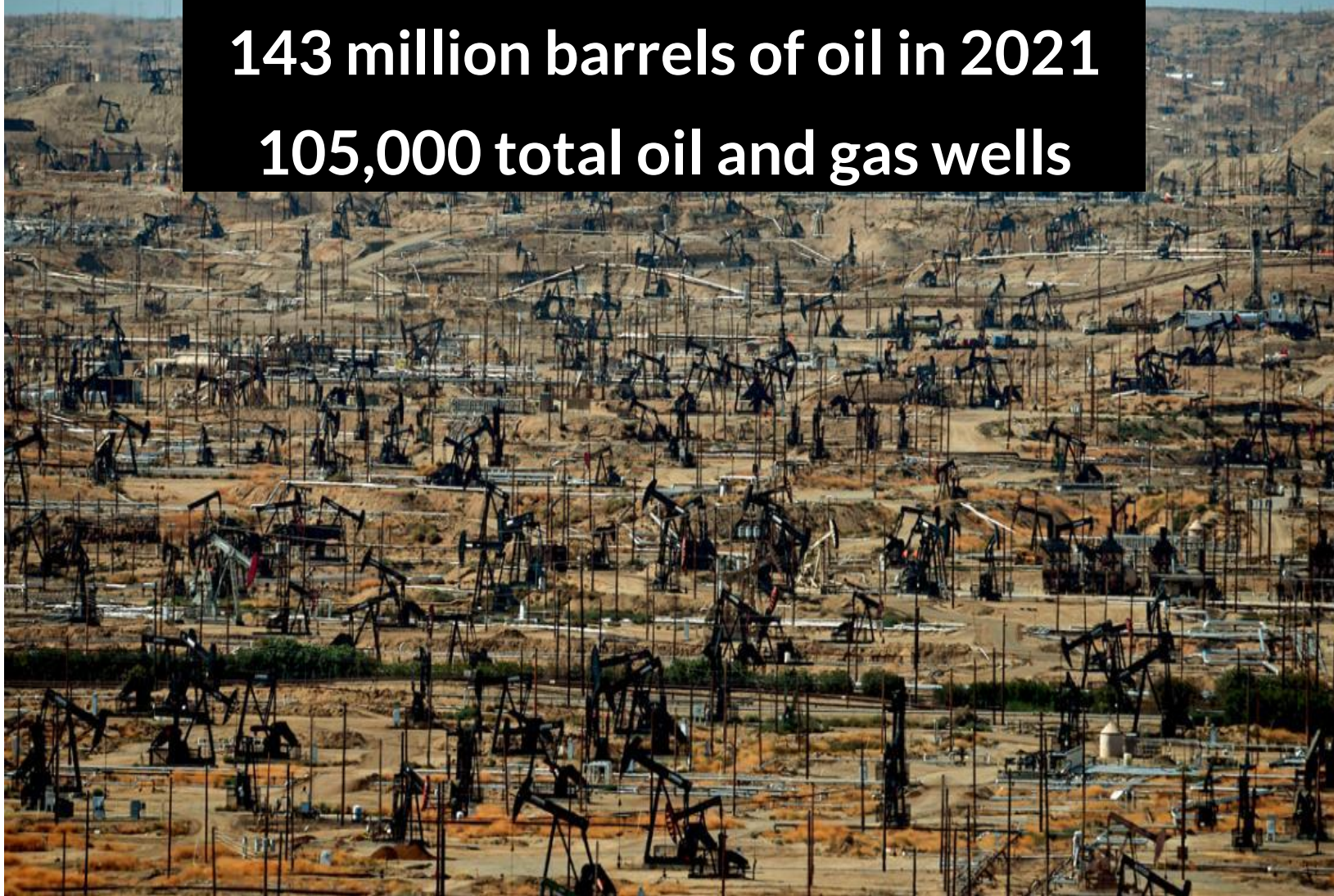


NEARLY 5 MILLION CALIFORNIANS LIVE WITHIN 1 MILE OF AN ACTIVE OIL OR GAS SITE.

A majority of these residents are from low-income or Black, Indigenous, and Latinx communities – a testament to the reality of environmental racism in California today.

[LEARN MORE](#)

California is #7 for Oil Production
143 million barrels of oil in 2021
105,000 total oil and gas wells



OIL PRODUCTION

Heavy truck traffic



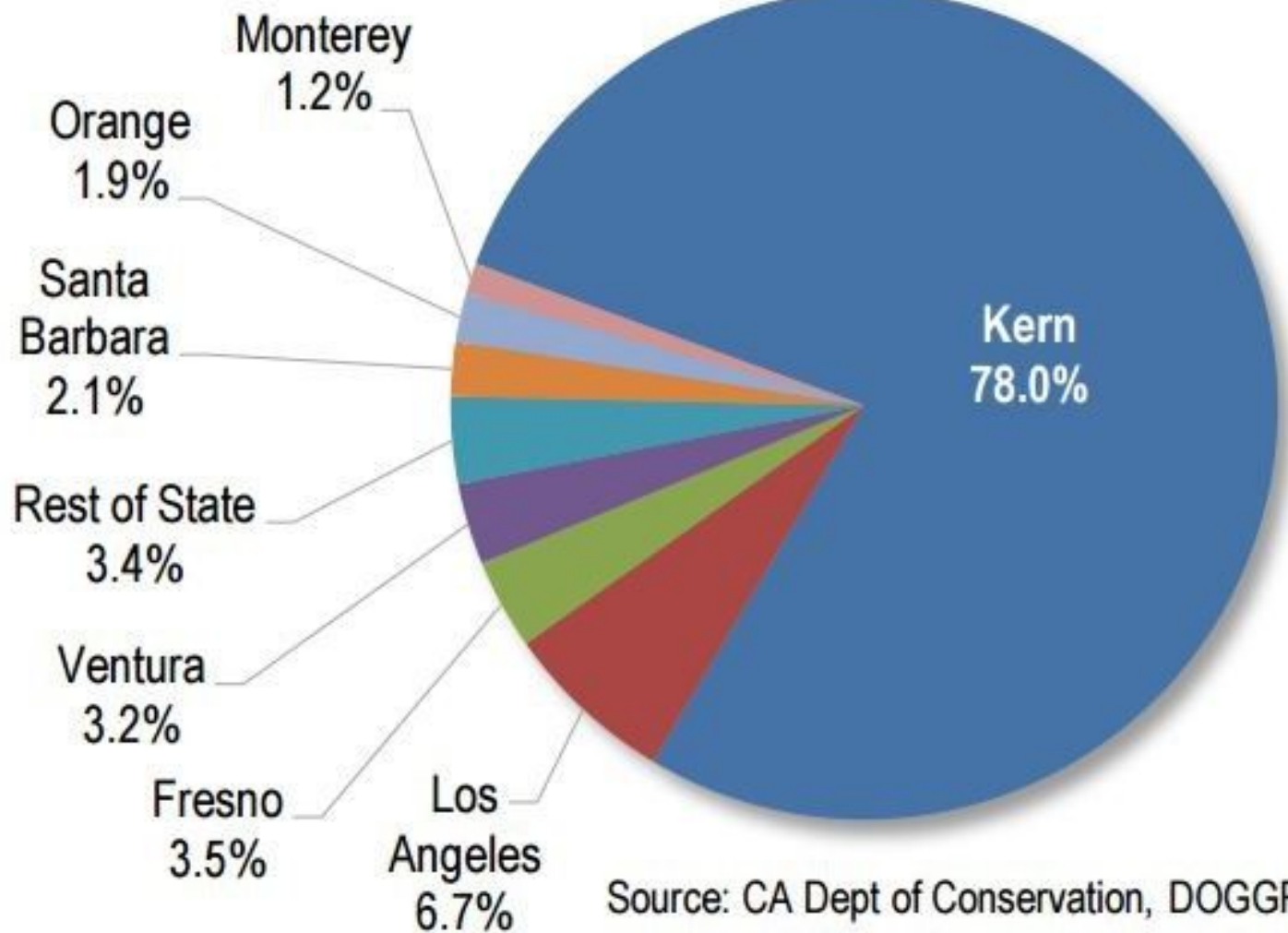
Derrick



Toxic chemicals are pumped to extract petroleum & gas.

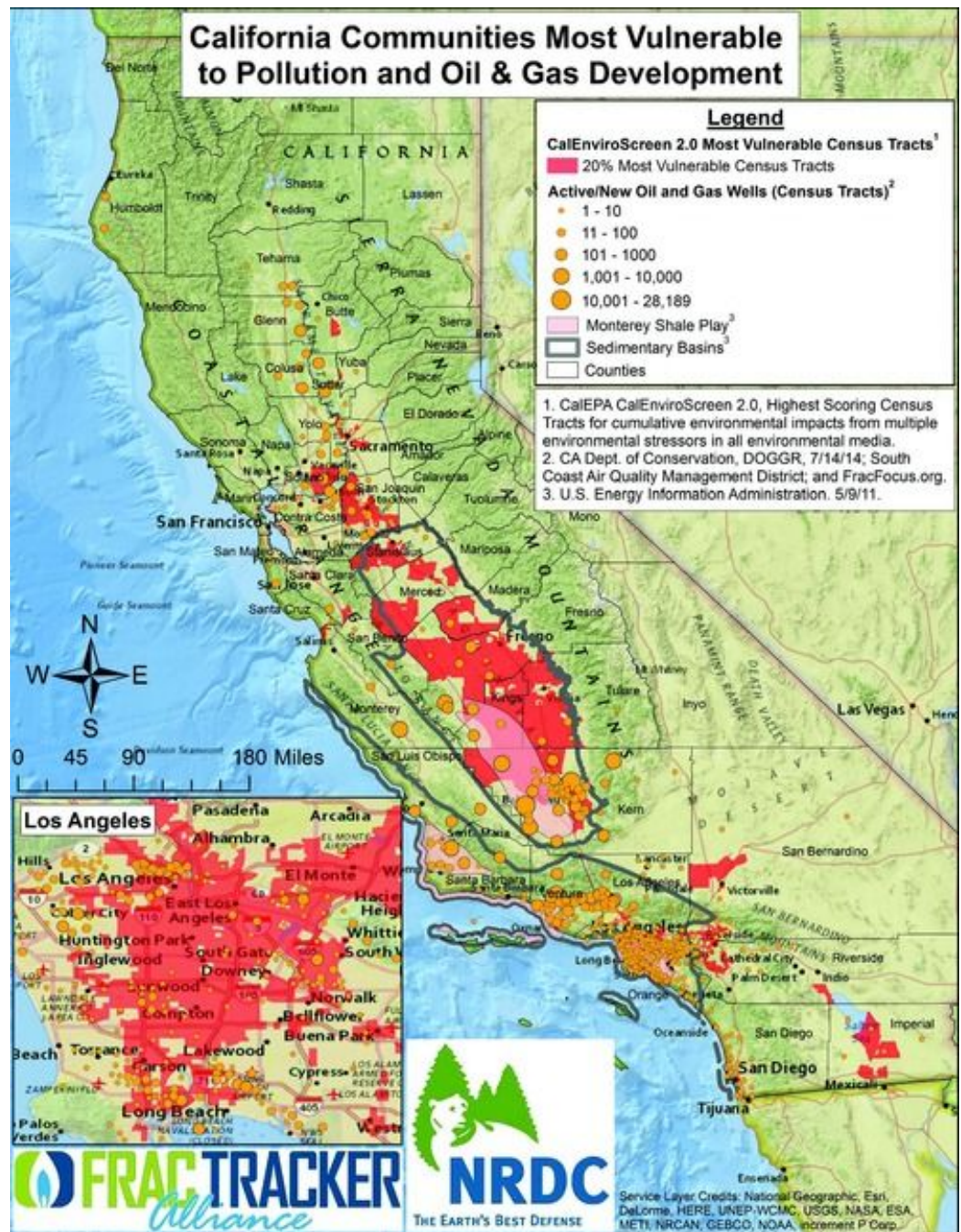
Oil

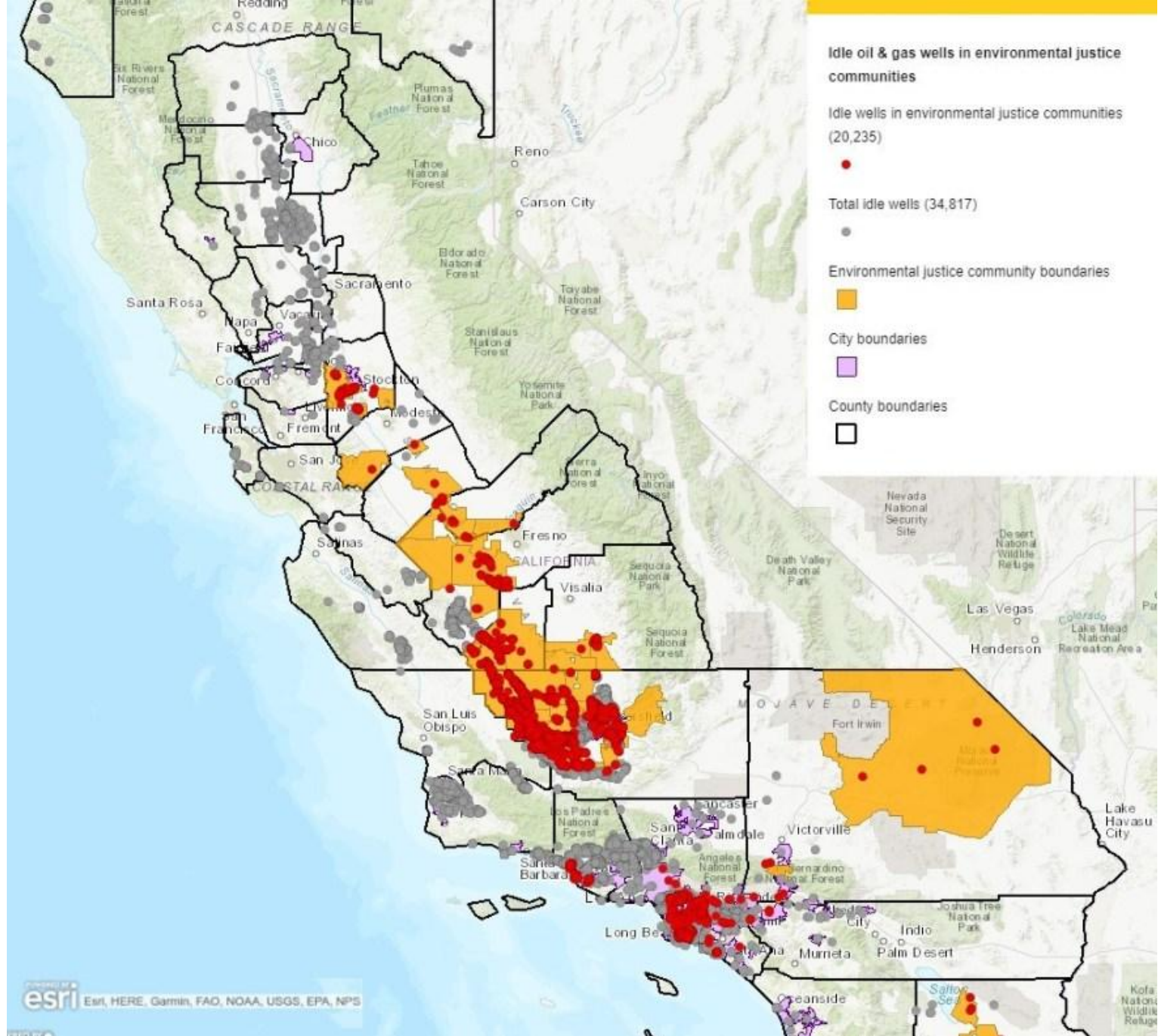
Active Wells in CA by County 2015




Over 7 million Californians (almost 1 in 5) live within 1 mile of an oil and gas well.

Disproportionately impacting communities of color and low income households







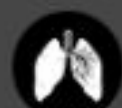
HEALTH EFFECTS OF LIVING NEAR OIL EXTRACTION SITES


 Runny nose, nosebleeds

 Headaches, dizziness

 Eye, throat, skin irritation

 Adverse birth outcomes (low birth weight)

 Respiratory ailments

 Endocrine disorders (thyroid)



Homes



Schools



Parks



Churches



Health-care facilities

Vulnerable Places



Homes



Daycares
& Schools

The New York Times
***New Research Links Air Pollution to
Higher Coronavirus Death Rates***



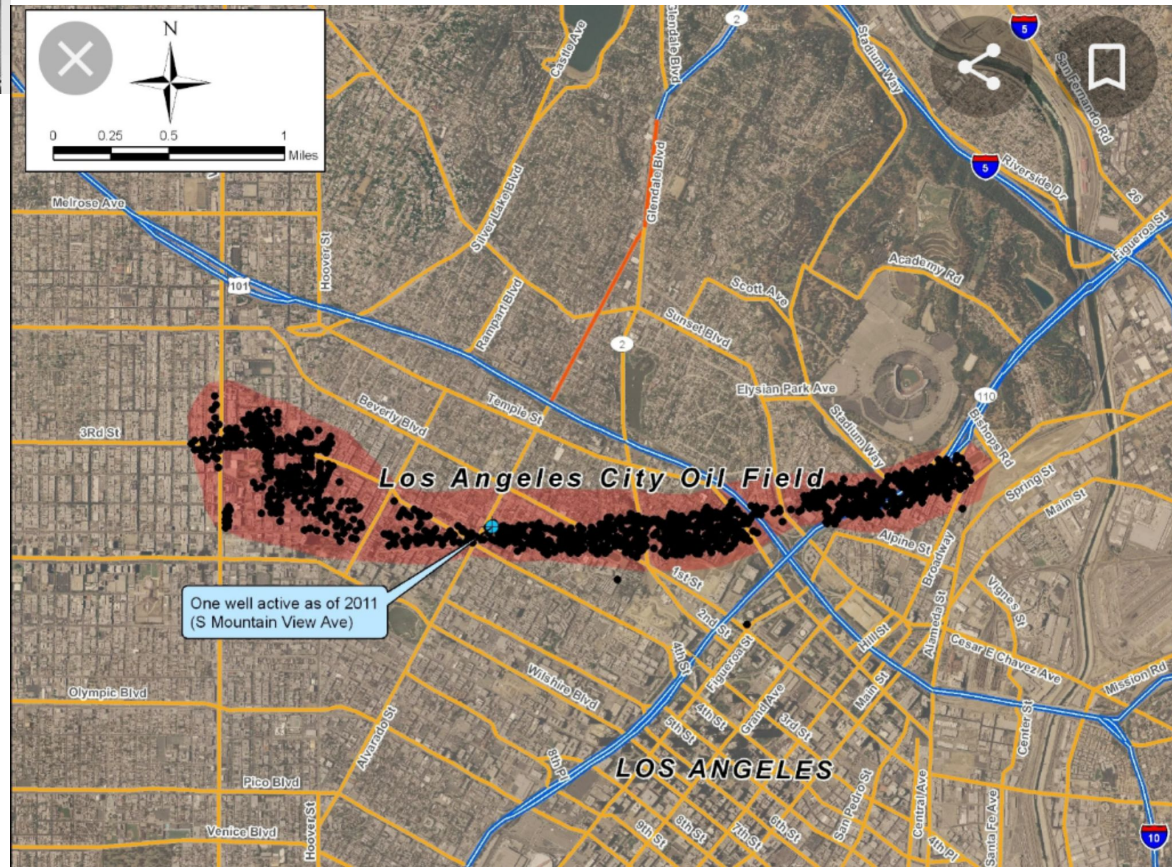
Farmland and Aquifers



Parks &

WORLD ECONOMIC FORUM
[Agenda](#) [Platforms](#) [Reports](#) [Events](#) [About](#)
**The deadly link between
COVID-19 and air pollution**

REST IN PEACE



MY



NEIGHBORHOOD



IS



KILLING



ME

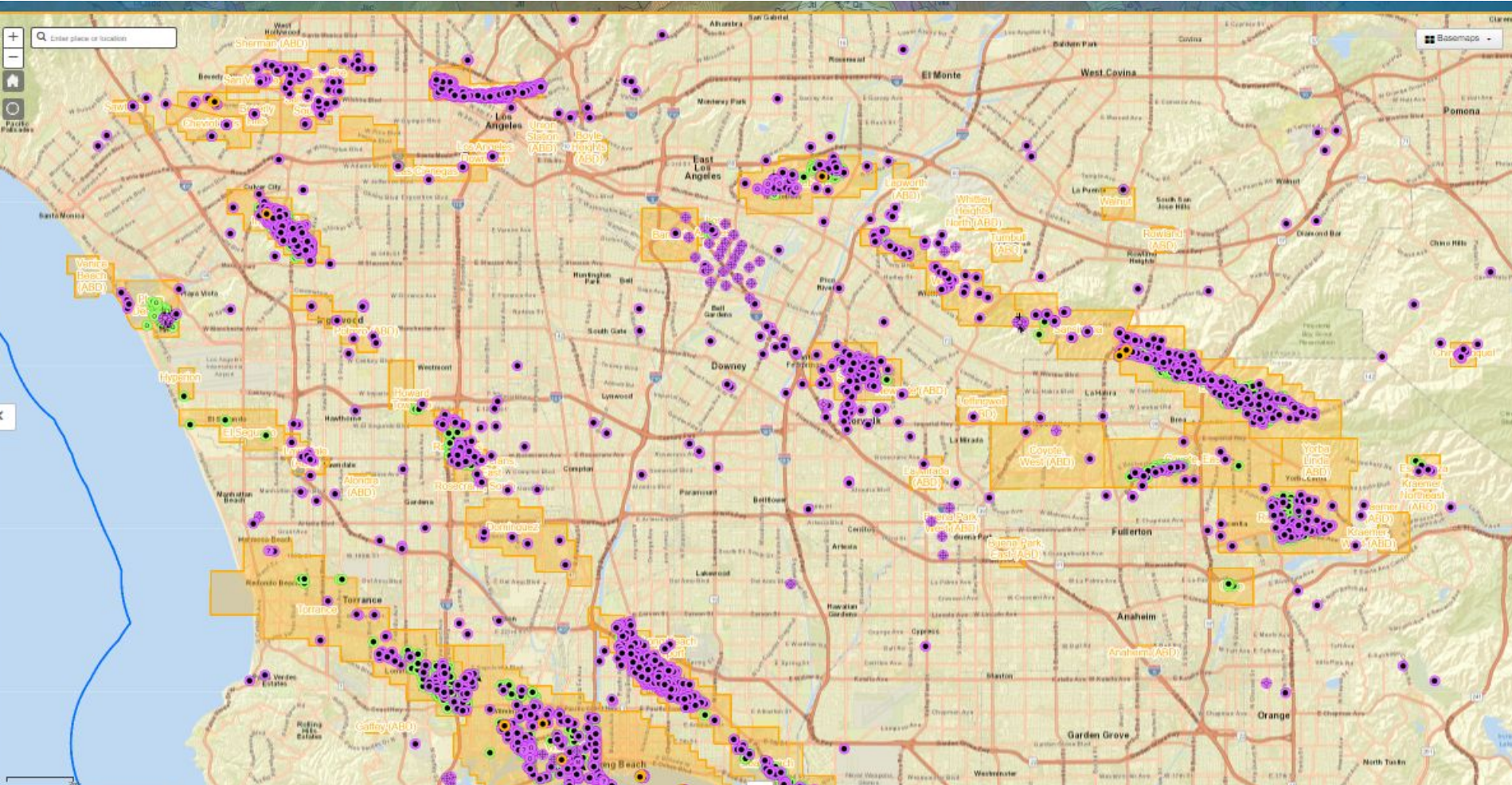


SIERRA CLUB

**Advancing Local Policy Solutions
to Address Oil Drilling**

**Monica Mariko Embrey
Senior Associate Director of
Energy Campaigns**

Neighborhood Oil Drilling in LA County



Active Wells = 3,220
Idle wells = 3,762



Signal Hill, near Long Beach, California



Beverly Hills High School's "Tower of Hope"

LA County Board of Supervisors



LA County Policy Example:

1. Prohibit all new oil and gas extraction wells
2. Phase out current oil drilling
 - Designate as illegal
 - Legal study to determine timeline
3. Plan to clean up oil and gas wells
 - Pilot Program
 - Secure resources
4. Just Transition
 - Develop displaced workers strategy
 - Develop community strategy

LA County: Land Use Policy



Title 22 Oil Well Ordinance

“These regulations establish the time, place, and manner and mitigate the impacts of the drilling and operation of those production facilities on adjacent land uses to protect the health, safety, public welfare and environmental resources of the County.”



Baldwin Hills Community Standard District:

“These standards are implemented to protect the comfort, health, safety and general welfare of people living, working, and recreating in surrounding areas”

MOTION BY SUPERVISORS HOLLY J. MITCHELL
AND SHEILA KUEHL

September 15, 2021

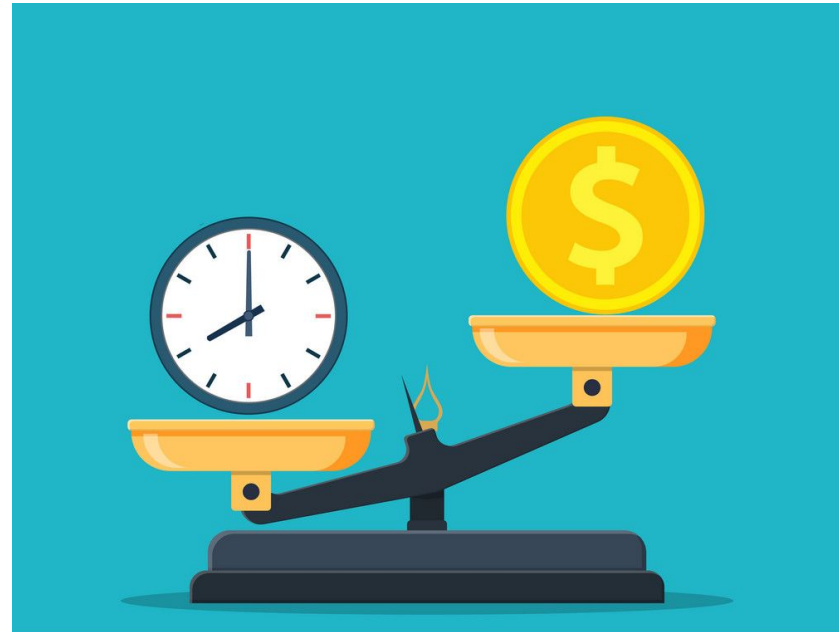
Protecting Communities Near Oil and Gas Drilling Operations in Los Angeles County

WE THEREFORE MOVE THAT THE BOARD OF SUPERVISORS:

1. Instruct the Director of Department of Regional Planning (DRP), in coordination with the Chief Sustainability Office (CSO) and the Director of the Los Angeles Department of Public Health (DPH), to:
 - a. Modify the pending Draft Oil Well Ordinance for unincorporated Los Angeles County (County) as directed by the Board of Supervisors' (Board) March 29, 2016 motion as follows:
 - i. Prohibit all new oil and gas extraction wells in all zones, including those allowed or planned for under existing discretionary permits; and
 - ii. Designate all existing oil and gas extraction activities, including those allowed or planned for under existing discretionary permits, as legal nonconforming uses in all zones.



Amortization Study



2. Instruct the Director of DRP, in collaboration with the Chief Executive Officer (CEO), to report back to the Board in writing within 120 days detailing the process for selecting and contracting with an expert/consultant to conduct an amortization study of oil and gas drill sites in the unincorporated areas of the County to determine the most accelerated phase out period that is legally justifiable and recommendations to guide a phase-out process.



REVISED MOTION BY SUPERVISORS JANICE HAHN AND
HOLLY MITCHELL

Developing an Oil Well Cleanup Pilot Program for Los Angeles County

WE, THEREFORE MOVE that the Board of Supervisors:

1. Direct the Office of Oil and Gas, in coordination with the California Geologic Energy Division, the Chief Sustainability Office and Department of Regional Planning, Department of Public Health and Fire Health HazMat to develop a framework for an Oil Well Cleanup Pilot Program to plug and abandon idle oil wells, with the goals of improving environmental conditions for frontline communities and maximizing local, high-road jobs. The Pilot Program Framework shall include:

BLUEPRINT FOR JUST TRANSITION

JUST
TRANSITION
FUND



DOWNLOAD AT JUSTTRANSITIONFUND.ORG/BLEUPRINT

AGN NO. []

REVISED MOTION BY SUPERVISORS HOLLY J. MITCHELL
AND JANICE HAHN

September 15, 2021

Developing a Comprehensive Strategy for a Just Transition Away from Fossil Fuels in Los Angeles County

WE THEREFORE MOVE THAT THE BOARD OF SUPERVISORS:

1. Direct the Chief Sustainability Office to implement the recommendations outlined in the initial Just Transition Strategy report, including the following:
 - a. Expand the Stakeholder Taskforce to be inclusive of frontline and tribal communities, including indigenous communities and representatives of local Native Nations, additional industry representatives, labor organizations and workers, and workforce development partners;

Just Transition

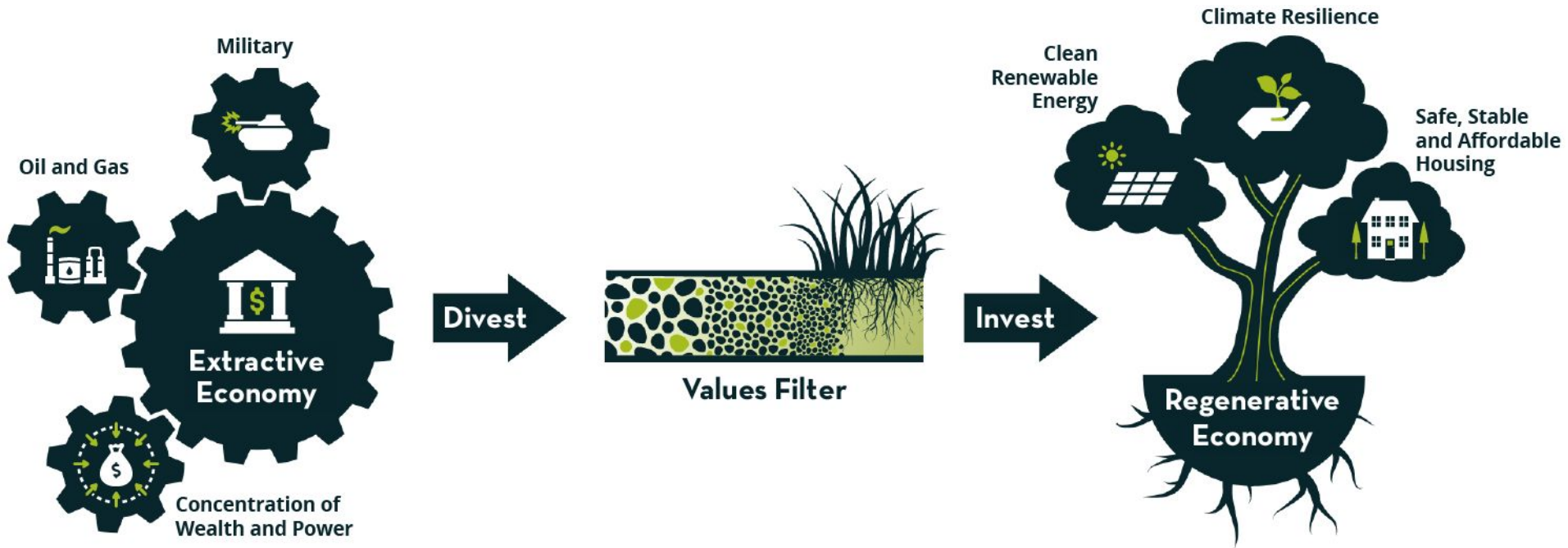


Image Credit: Movement Generation & APEN



1. Plans for displaced workers
2. Site remediation and reuse policies
3. Financing the solutions





MIA LEHRER
ARCHITECTS
LANDSCAPE ARCHITECTS

Concept Illustrative
Baldwin Hills Park Los Angeles, CA



FRACTRACKER

A L L I A N C E

State Policy Solutions to Improve Environment Equity

Kyle Ferrar, MPH

FracTracker Alliance

Western Program Coordinator

Outline

Areas in need of policy change:

1. Neighborhood drilling and extraction

- 3,200' setbacks for frontline communities
- Oil and gas activity in the setback zone

2. Permitting new oil and gas wells

- NewsomWellWatch.org
- Permitting slow down

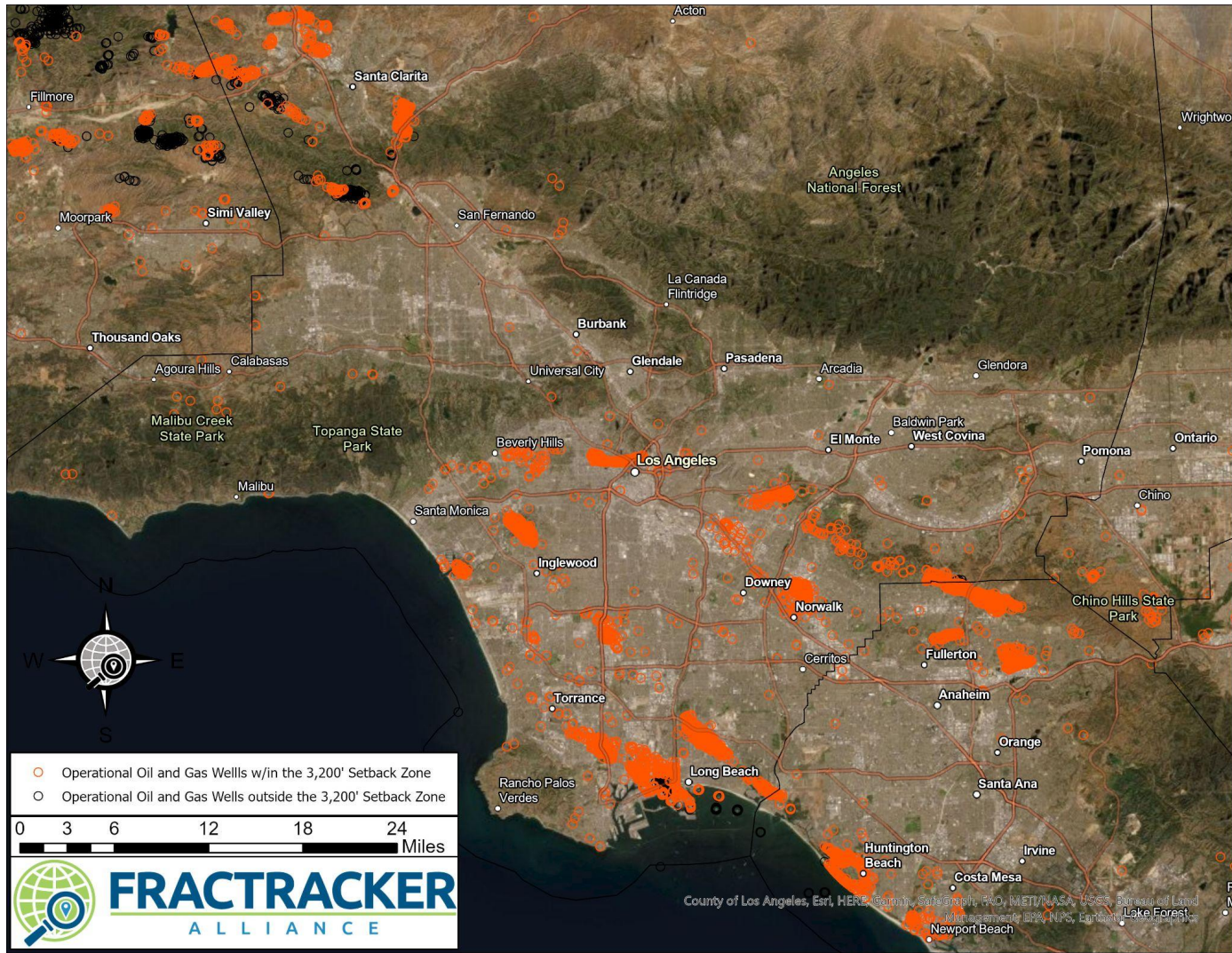
3. The California Oil and Gas Rule (COGR) - Methane Emissions

- Major Loopholes in the CARB rule
- CARB 2022 AB32 Climate Change Scoping Plan

Communities within the 3,200' Setback Proposal

There are about 2,764,000 Californians living within 3,200' of an operational oil and gas well.

Non-white (including Hispanic or Latino) Californians account for 69.0% of the total.



Well Counts and Production

103,890 wells listed as unplugged/operational (active/idle/new) in the “AllWells” dataset,

28,367 (27.3%) wells are located within 3,200 feet of a sensitive receptor.

The status of the wells include:

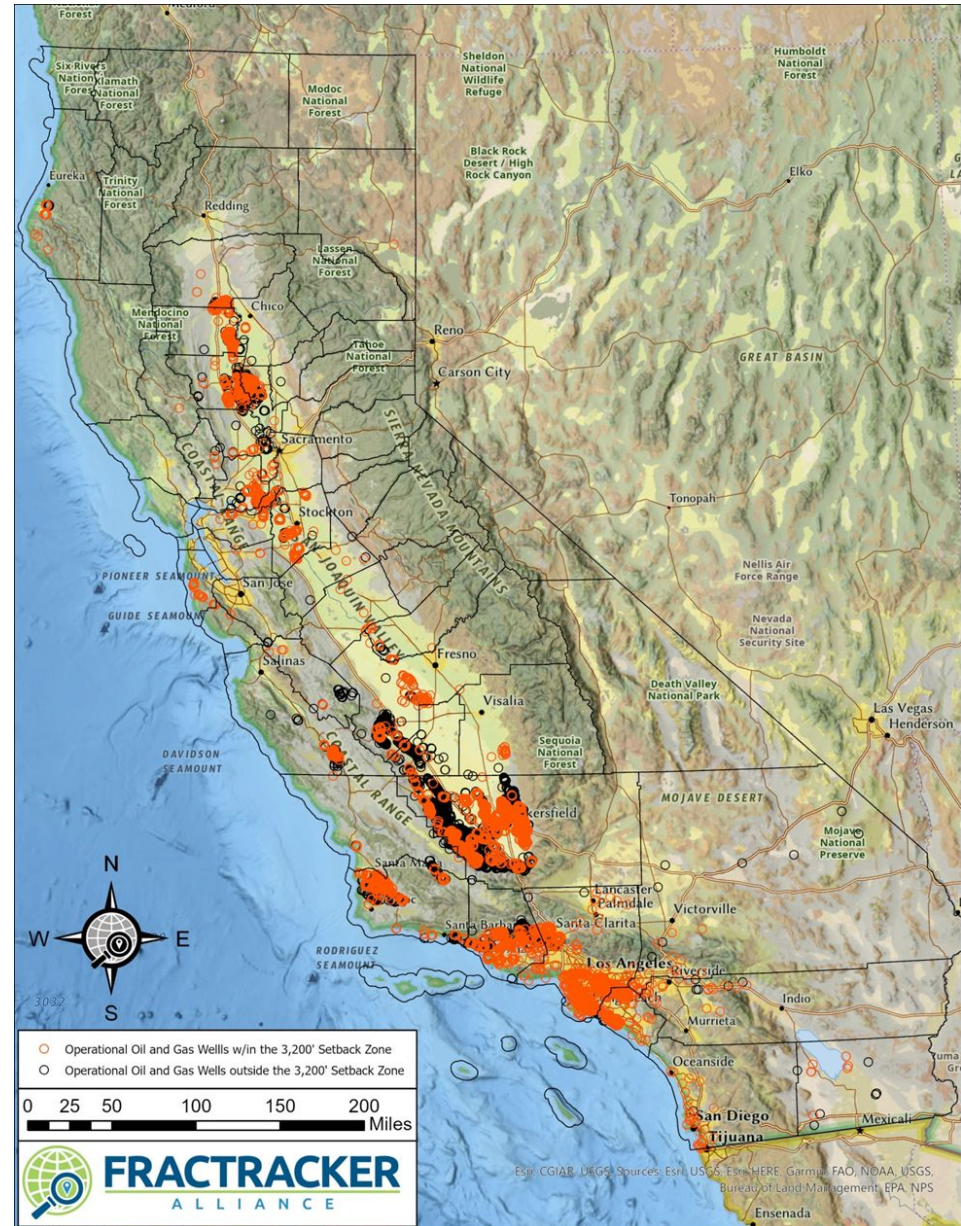
14,665 active (24.3%)

11,942 idle (31.0%)

744 new (15.2%)

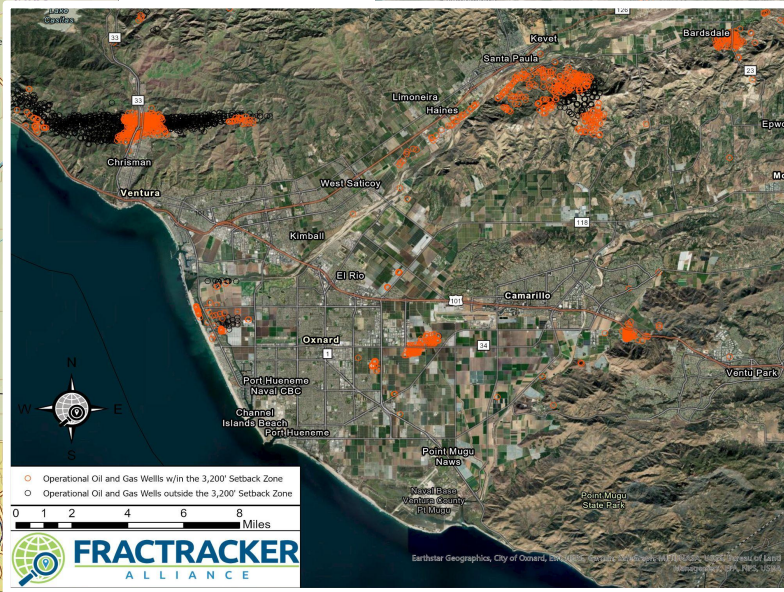
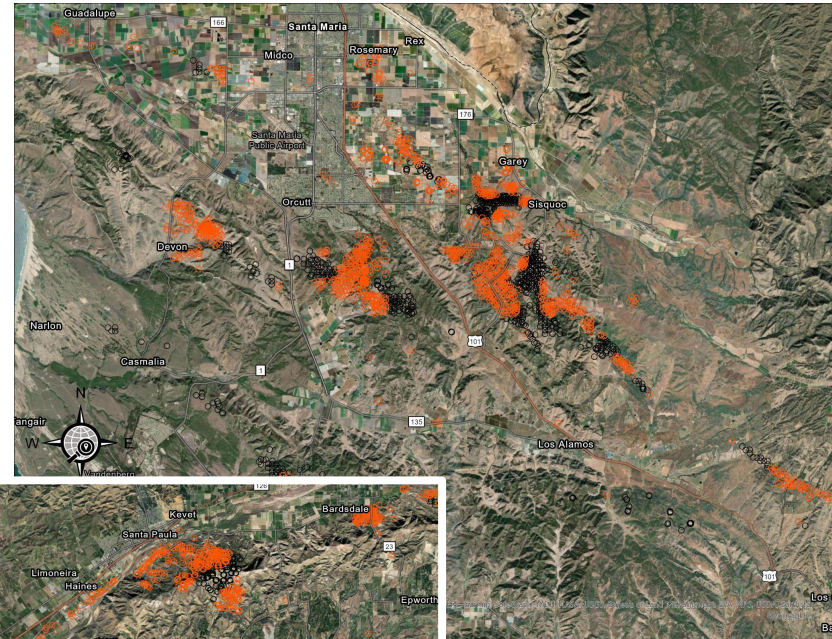
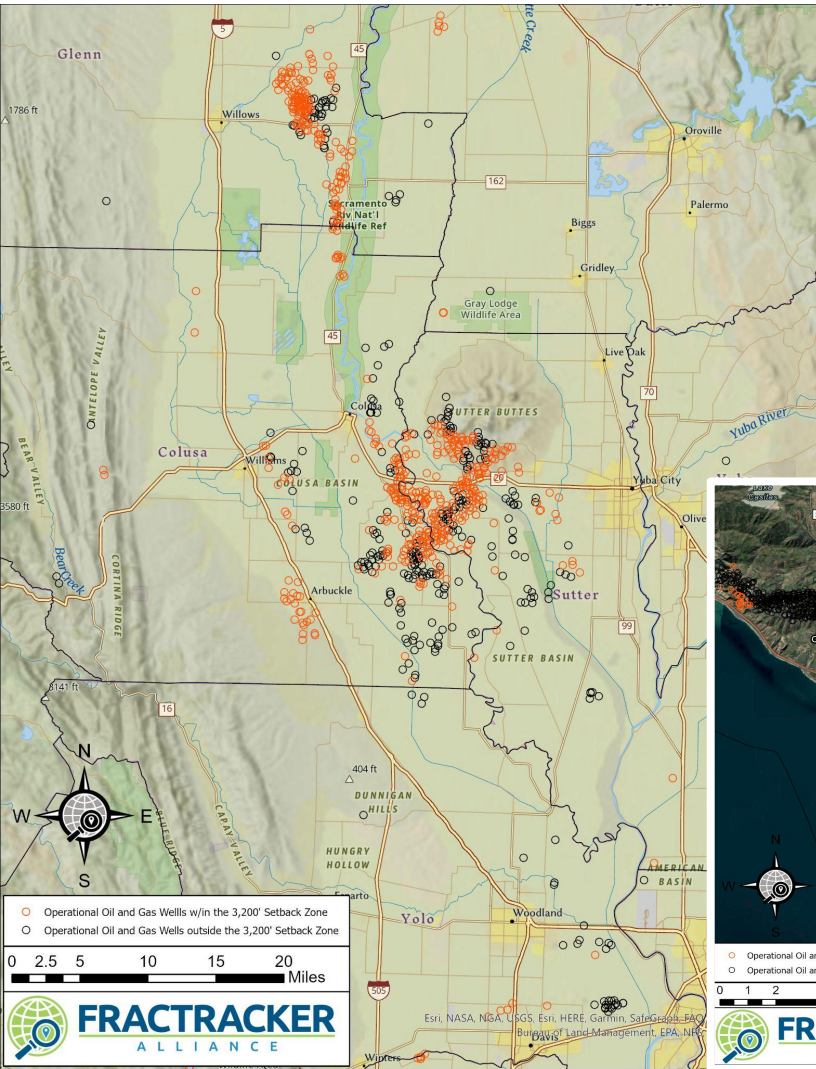
In 2020: 33,789,523 bbls of oil/condensate from within the 3,200' setback zone

23.9% of the total 141,638,219 bbls



New Drilling in Setback

Of the **1,110** new wells drilled since the beginning of 2020, just **123 (11.1%)** were located within the 3,200' setback zone.

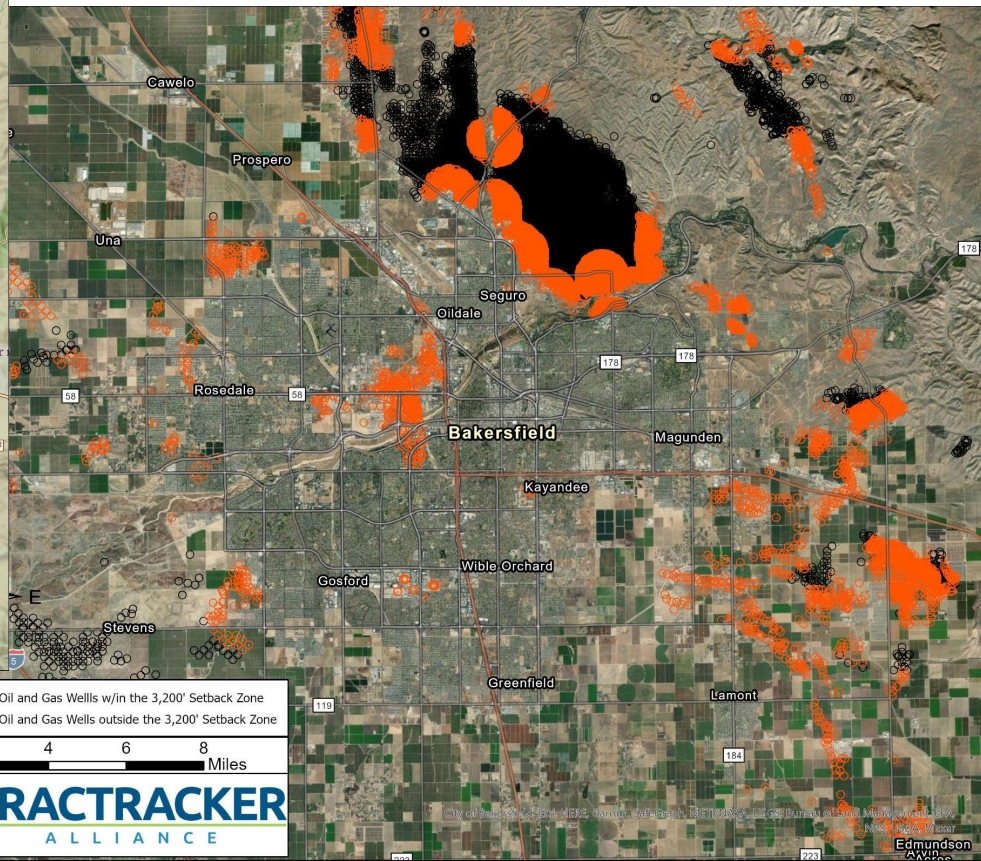
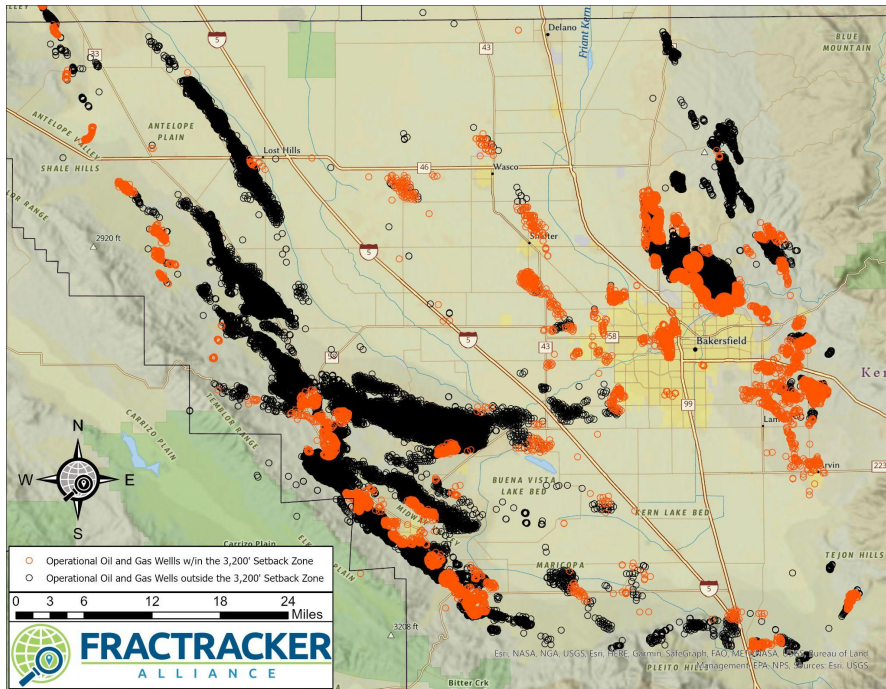


CalGEM Oil and Gas Well Permits in Setback

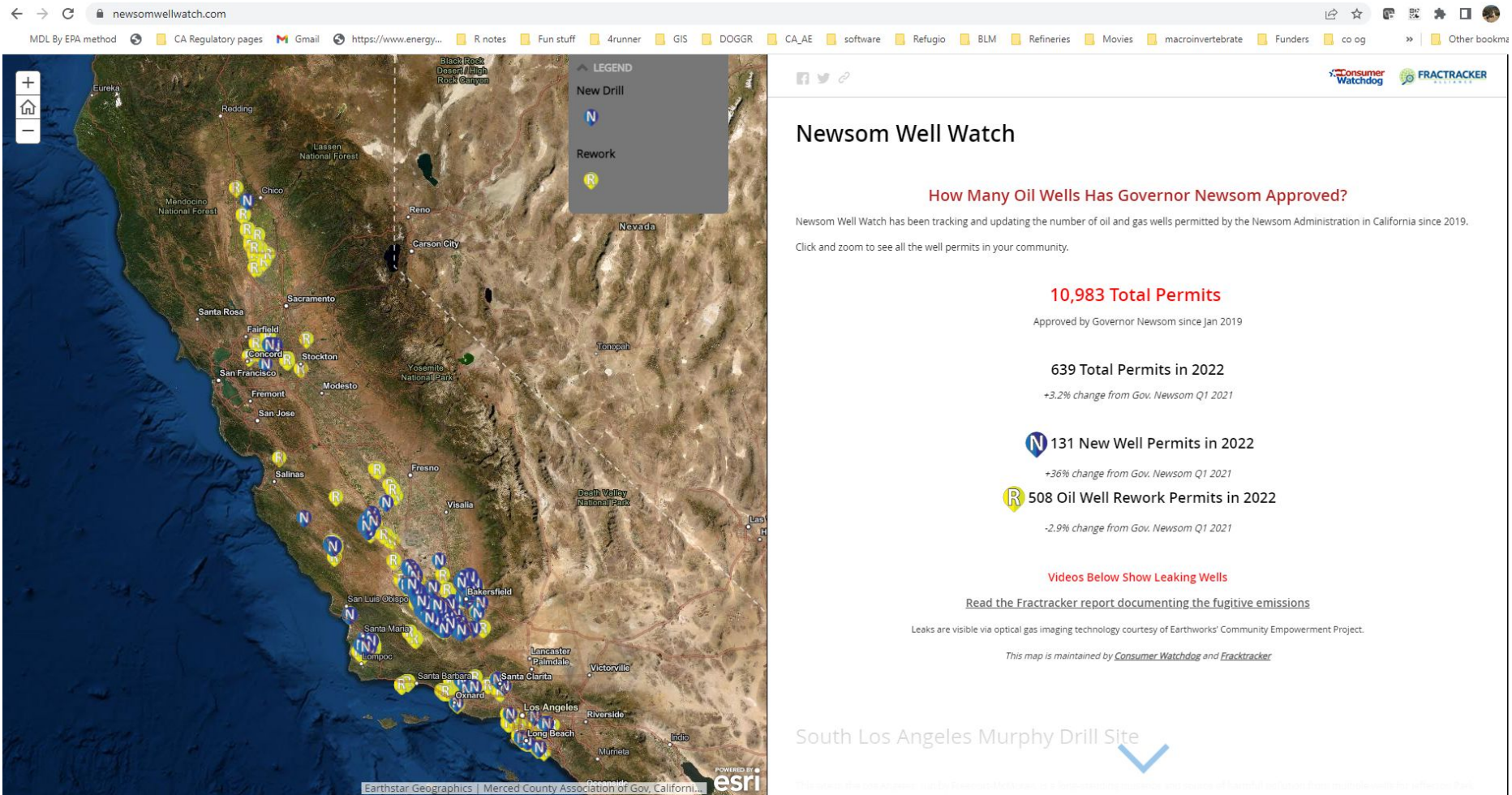
Of the **542 new drilling permits** issued by CalGEM, 120 (22.1%) were located within the 3,200' setback zone.

Of the **1,519 rework permits** issued by CalGEM, 375 (24.7%) were located within the 3,200' setback zone.

Of the **3,464 plugging permits** issued by CalGEM, 603 (17.4%) were located within the 3,200' setback zone.

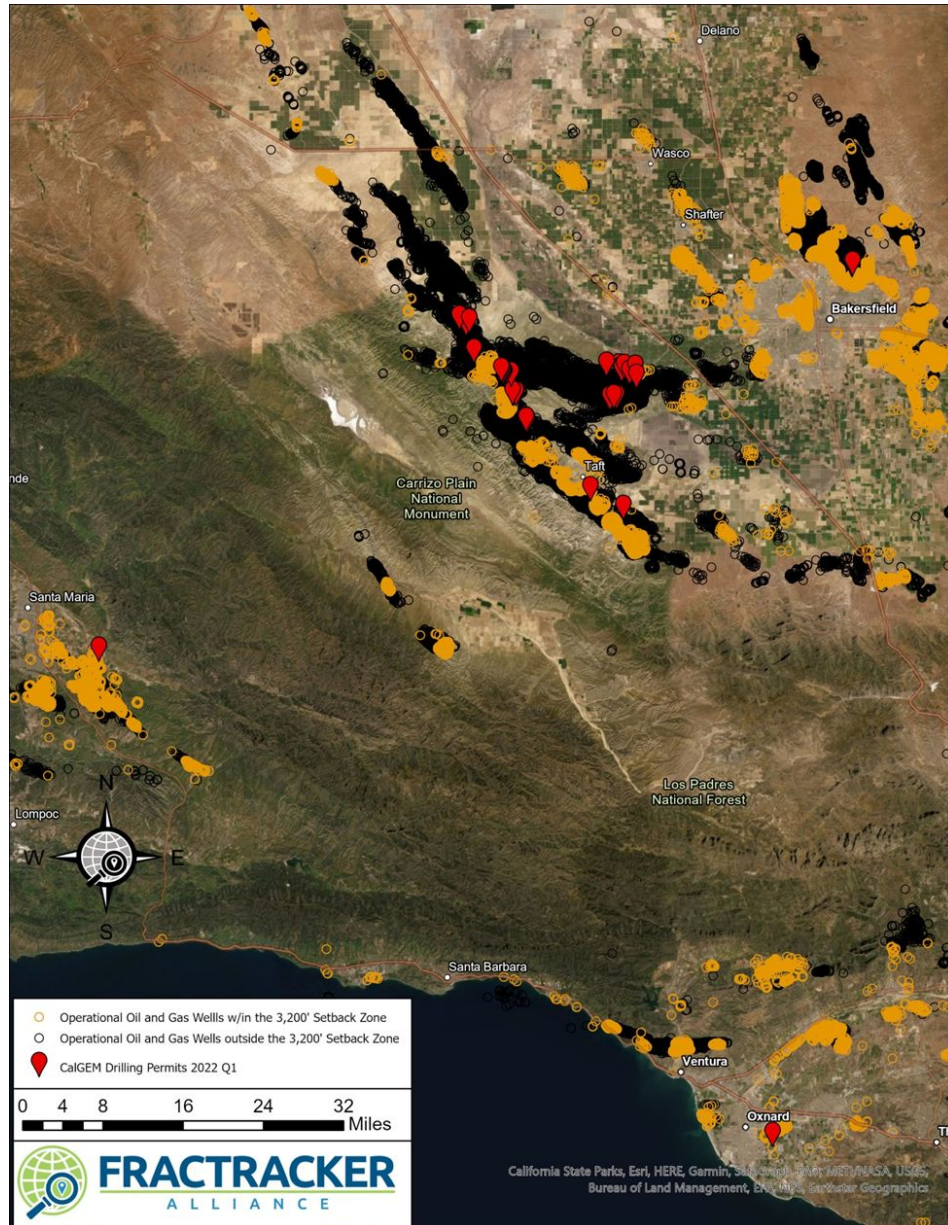


CalGEM Oil and Gas Well Permitting



[NewsomWellWatch.org](https://newsomwellwatch.org)

New Drilling Permits Issued during the 1st Quarter of 2022



**California Code of Regulations, Title 17, Division 3, Chapter 1,
Subchapter 10 Climate Change, Article 4 Subarticle 13:
Greenhouse Gas**

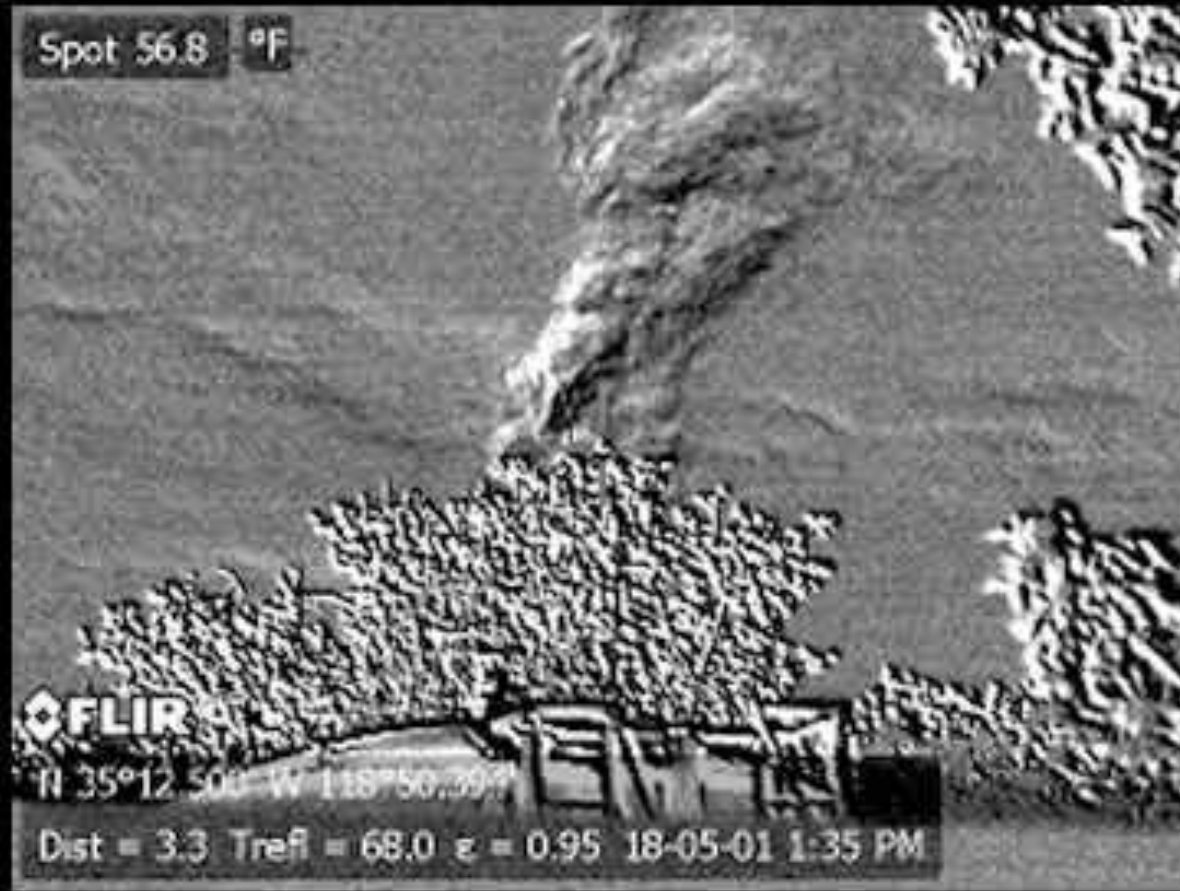
**California Air Resources Board (CARB)
Emission Standards for Crude Oil and Natural Gas Facilities**

- 1. Vapor Control Systems for small operators**
- 2. Venting Emissions from Pressure-Vacuum (PV) Relief
Thief Hatches**
- 3. Discontinuing Inspections**

Current CA regulations fail to stop emissions from separators (wash tanks) and storage tanks on oil and gas well-sites.



Venting Uncontrolled Emissions from Pressure-Vacuum (PV) Relief Thief Hatches is Allowed by Air Districts



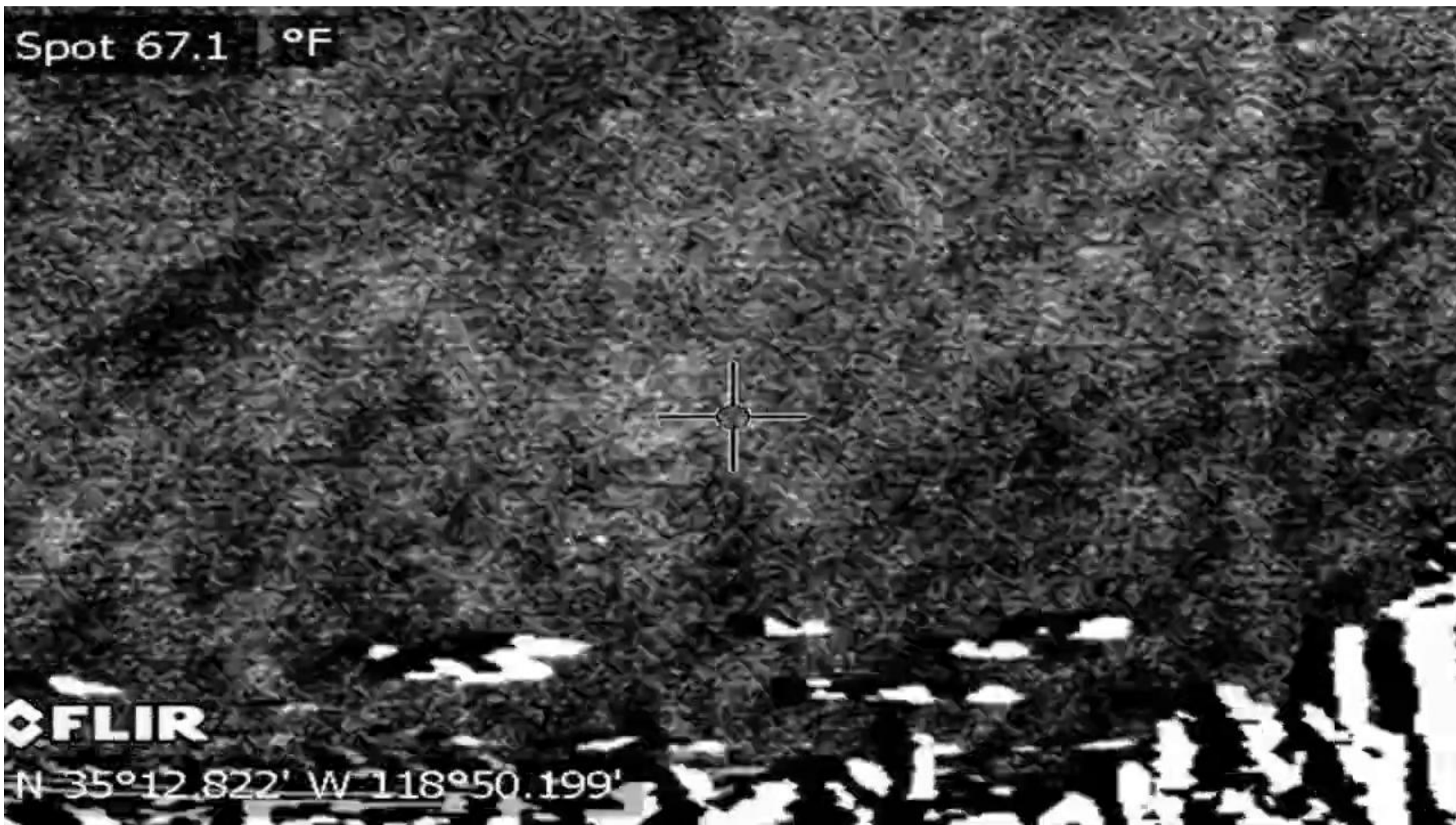
Discontinuing Inspections

The rule [95669(g)] allows for operators to discontinue inspections as infrastructure ages

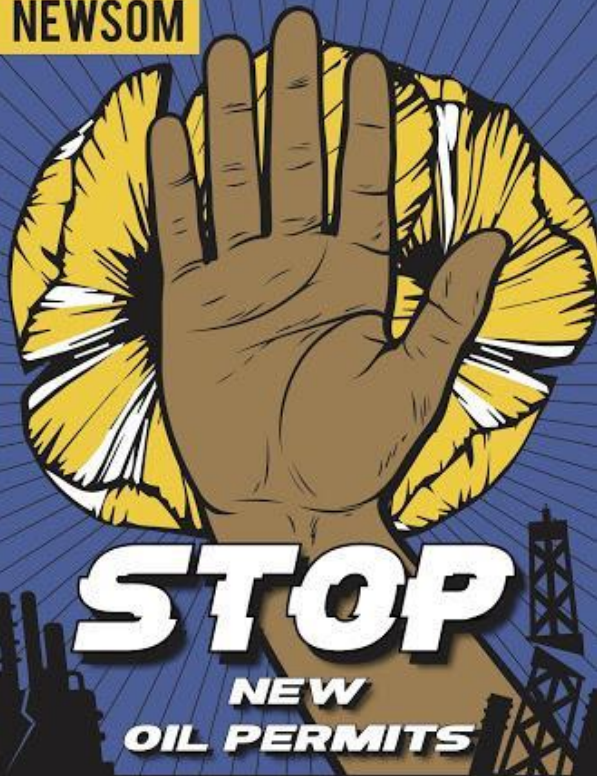


Call to Action

CARB 2022 AB32 Climate Change Scoping Plan



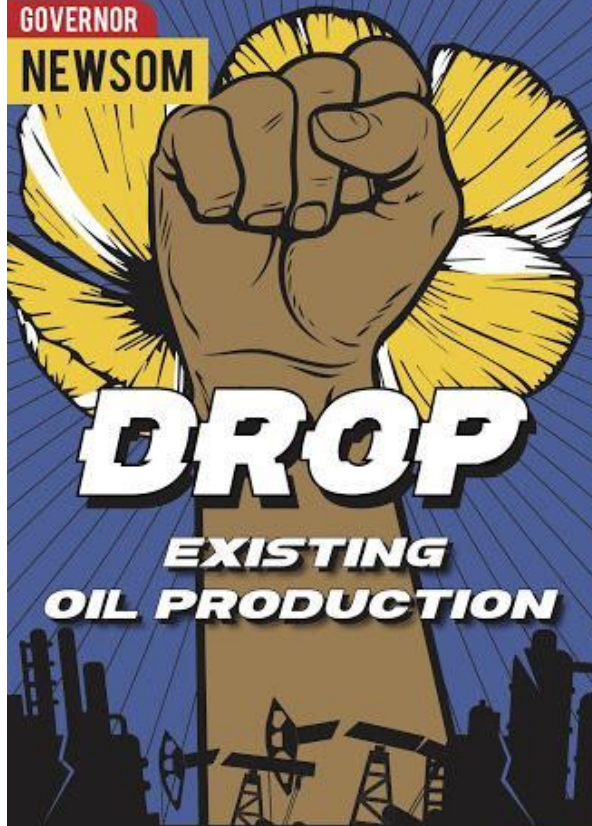
GOVERNOR
NEWSOM



LASTCHANCEALLIANCE.ORG

LAST
CHANCE
ALLIANCE

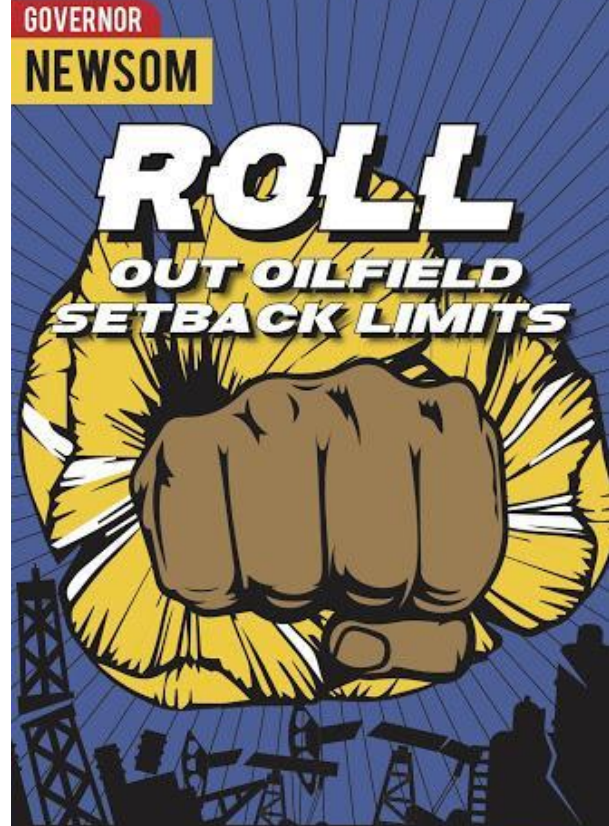
GOVERNOR
NEWSOM



LASTCHANCEALLIANCE.ORG

LAST
CHANCE
ALLIANCE

GOVERNOR
NEWSOM



LASTCHANCEALLIANCE.ORG

LAST
CHANCE
ALLIANCE

CalGEM: Public Health & Safety Rule



Gov Gavin Newsom

“The intent of the rulemaking is to establish a transparent set of rules designed to protect residents and communities near oil and gas extraction sites.”

Call to Action

**FRACKING
WELL**

**ELEMENTARY
SCHOOL**



This. Is. Not OK.

Petition: sc.org/caoil



Questions?

