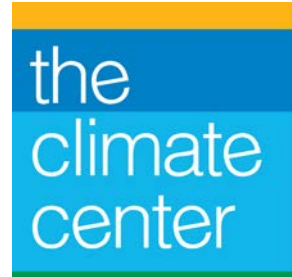


Community Energy Resilience



December 2, 2020





Feedback: CA Community Energy Resilience Toolkit

Support for SB 1314 for 2021

Letters of support for pursuing funding

An aerial photograph of a large wildfire. The fire is intense, with bright orange and yellow flames visible along a ridge. Thick, dark smoke billows upwards, partially obscuring the sky. The surrounding area is a dense forest of green trees.

Californians are suffering from

Record-breaking wildfires

Power shutoffs

Heat waves

Brownouts

High energy costs

Inequity

Cities have limited resources and capacity to respond to energy resilience needs in the face of competing multiple priorities.



The Opportunity



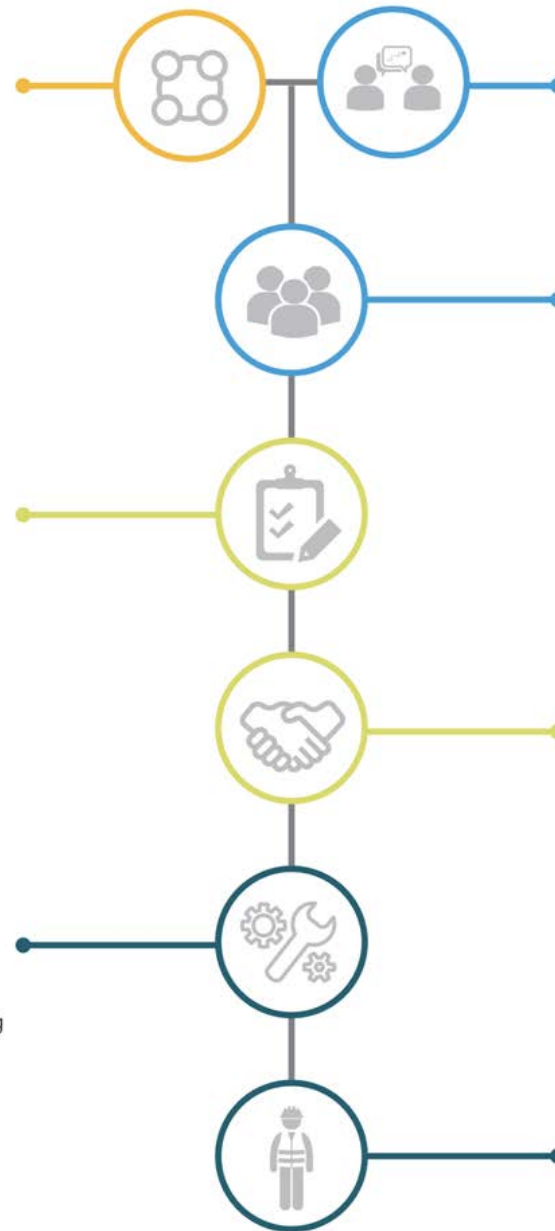
Public support for climate action is growing

Practical toolkit creates efficiencies

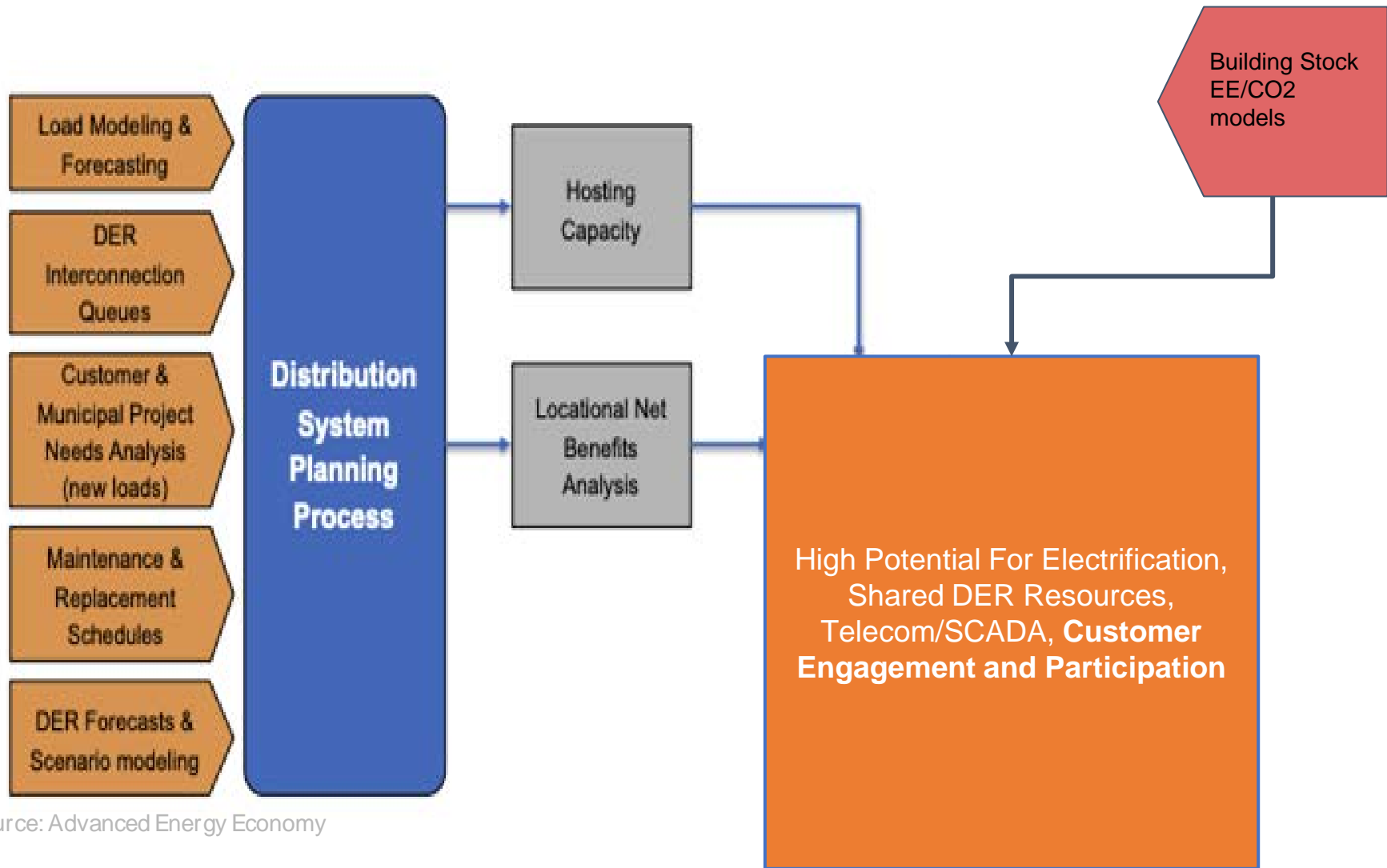
Other communities have paved the way

Community Resilience Planning Process

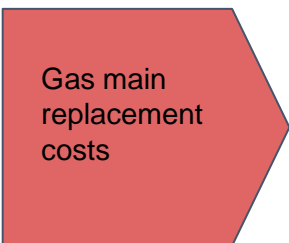
- Community Engagement
- Asset Mapping
- Feasibility Studies
- Finance Support
- Workforce Training
- Ongoing Support & Evaluation



9



Source: Advanced Energy Economy



Source: Boston University HEET Study

Small, But MIGHTY - Tenino, Washington



- Secured \$7m in partnerships and grants
- Installed solar PV microgrid with battery storage
- Integrated vocational and technical training
- Prepared for Virtual Power Plant technology testing
- Successfully partnered with utility & Department of Commerce



Legislative & Funding Letters of Interest

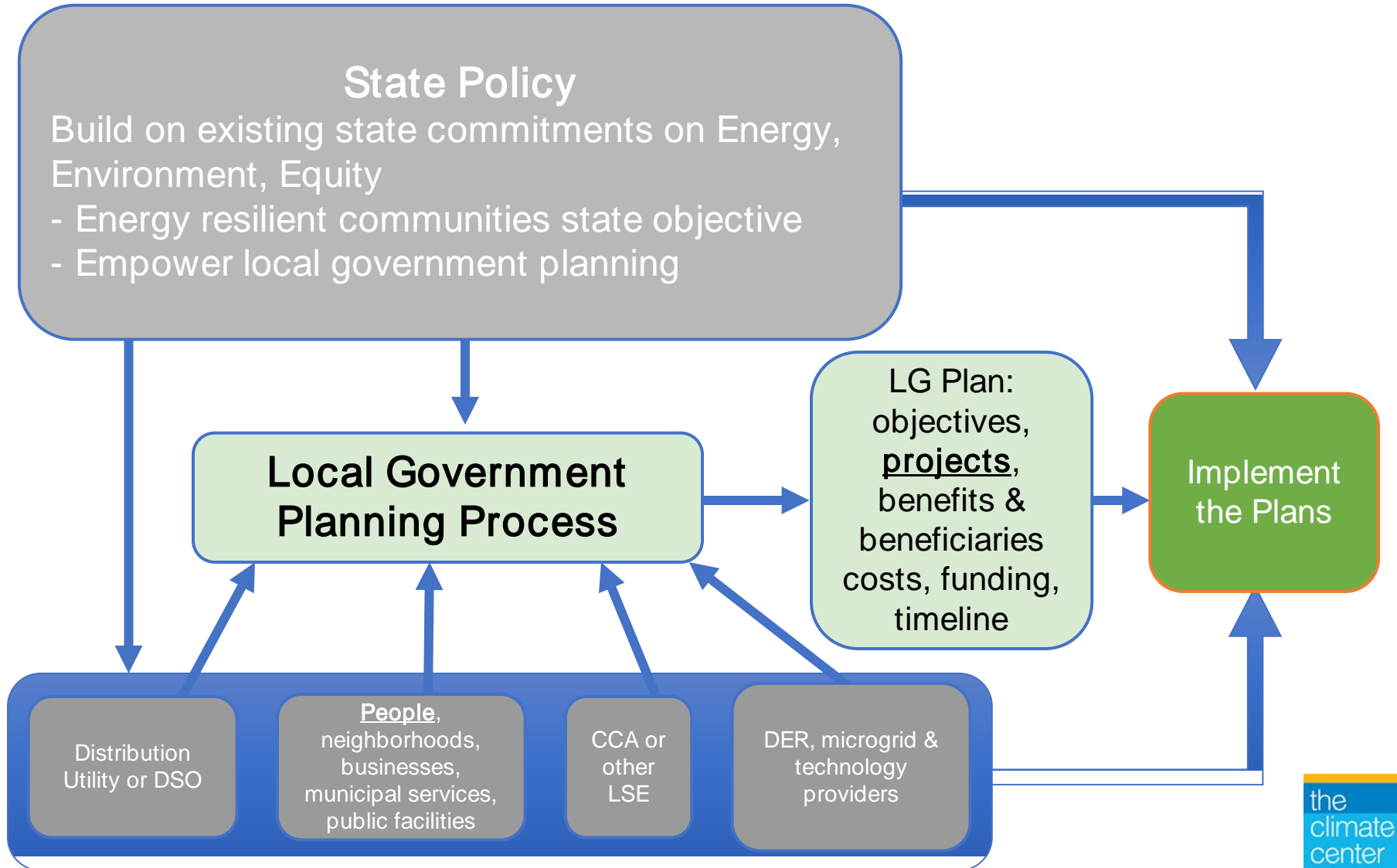
Legislative effort:

- Support SB 1314 Reintroduction

Funding effort - Alert funders to need for shared resources

- Toolkit
- Capacity & Technical Assistance

Community Energy Resilience Act: Proposed New Legislation in 2021



Feedback!

Community Asset Mapping

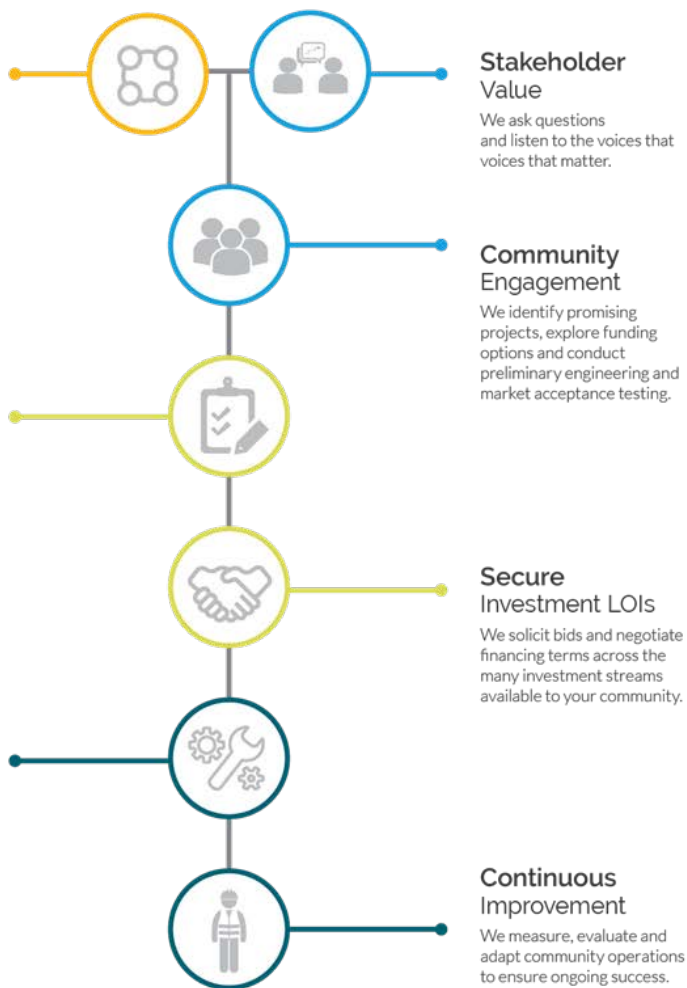
We map local generation, loads, infrastructure, civic, social and environmental assets.

Feasibility

We author invaluable project pro formas and due diligence documents, based on thorough engineering, legal and financial analysis.

Project Realization

We create and deploy training and curriculum for long-term community ownership.



- What are your city's core values?
- What are your obstacles to implementation?
- Where does your city need the most support?
- Would you implement a shared tool if you had funding?

Next Steps

Follow up with those interested regarding

- Letters of Support for community energy resilience planning legislation
- Letters of Interest to document a need for funders

Continue to share information with those who indicate interest:

- Recording & survey link
- Areas of shared interest and need across the state (survey results)
- Evolving funding opportunities (state, federal or private)
- Follow on resources, webinars

Thank you!

Kurt Johnson 970-729-5051, kurt@theclimatecenter.org

Kate Ringness 415-307-3616, kate.ringness@smartblocks.org

Tanya Barham 1-866-578-7118, tanyab@communityenergylabs.com