



Soil as a Climate Solution

Climate Friday Virtual Town Hall

Ellie Cohen, The Climate Center, ellie@theclimatecenter.org

August 21, 2020 www.theclimatecenter.org

Endorse Climate-Safe California today! www.climatesafeca.org

the
climate
center

Climate Friday Virtual Town Hall - Aug 21, 2020

SOIL AS A CLIMATE SOLUTION

Guest Bios

Torri Estrada, Executive Director, Carbon Cycle Institute

testrada@carboncycle.org www.carboncycle.org

- Program Director, Marin Community Foundation
- Co-founder, Environmental Justice Coalition for Water
- Director, Latino Issues Forum
- Program Director, Urban Habitat.
- MS, Environmental Sociology & Policy, Univ of Michigan
- BS/BA, Environmental Science & Policy, and Ecological Anthropology, UC Berkeley.



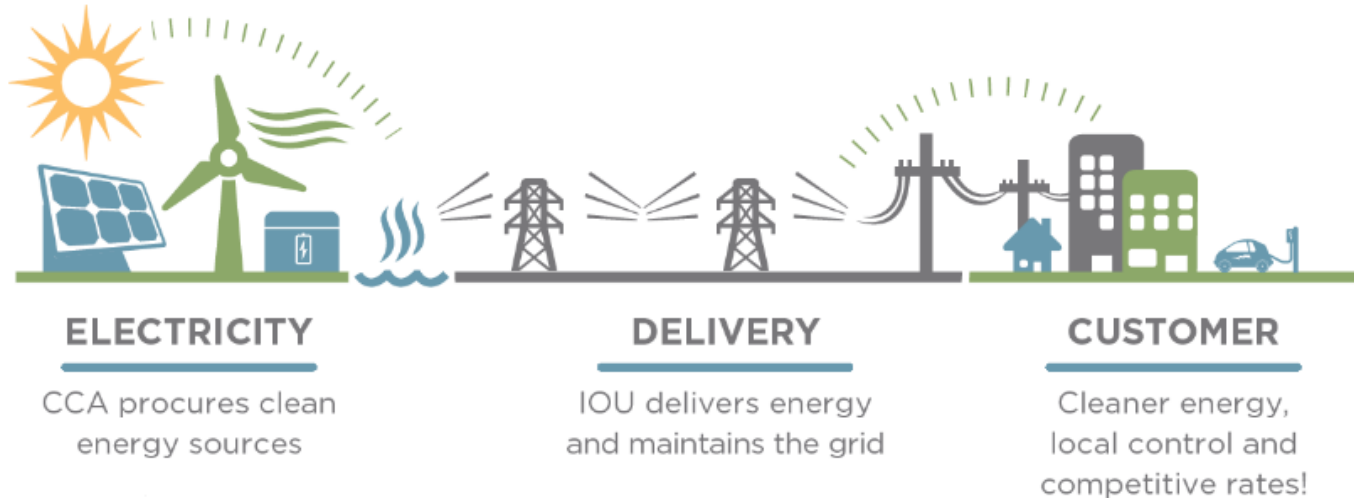
Wendy Millet, Ranch Director, TomKat Ranch, LeftCoast Grassfed

wendy@tomkatranch.org www.tomkatranch.org

- The Nature Conservancy working with farmers, ranchers, timberland owners
- Stanford Woods Institute for the Environment
- Cattle and dude ranches in Wyoming and Montana; local land trust, timber investment company, enviro. economics foundation
- B.A. in Literature from Harvard; studied Enviro. Economics at Univ. of Washington & Enviro. Planning at Univ. of Virginia
- Serves on CA Council of Land Trusts Board, Peninsula Open Space Farmland Advisory Committee Trust, and Save the Redwoods League Board



Mission: Speed and scale greenhouse gas reductions



**Key role in growing Community Choice Energy:
21 CCAs serving 11 million Californians- ¼ of
state- with 88% clean energy today!**

<https://theclimatecenter.org/our-work/community-choice/>
<https://cal-cca.org/cca-impact/>

RAISING THE ALARM

Evidence that tipping points are under way has mounted in the past decade. Domino effects have also been proposed.



9 of 15 global tipping points already activated... we still have time to prevent an uninhabitable 'hothouse' climate... if we act soon!

A. Amazon rainforest
Frequent droughts

B. Arctic sea ice
Reduction in area

C. Atlantic circulation
In slowdown since 1950s

D. Boreal forest
Fires and pests changing

F. Coral reefs
Large-scale die-offs

G. Greenland ice sheet
Ice loss accelerating

H. Permafrost
Thawing

I. West Antarctic ice sheet
Ice loss accelerating

J. Wilkes Basin, East Antarctica
Ice loss accelerating

Lenton, Rockstrom, Gaffney, Rahmstorf, Richardson, Steffen, Schyellhuber. **Nature**, Nov 27 2019
<https://www.nature.com/articles/d41586-019-03595-0>

It is a climate emergency!



www.latimes.com/environment/newsletter/2020-08-20/boiling-point-california-boiling-burning-boiling-point
www.cnn.com/2020/08/20/california-fires-heatwave-and-coronavirus-puts-state-in-crisis.html

CLIMATE-SAFE CALIFORNIA

Accelerate existing state policy timelines to achieve by 2030:

- 80% below 1990 GHG levels
- Net-negative emissions *-start drawdown so sequestration is greater than emissions*
- Resilient communities for *everyone*



Ensure a Just Transition for workers

- Support workers dependent on fossil fuel enterprises
- Continue creating jobs for building, construction and other trades as we solve climate change together



<https://www.iddri.org/en/publications-and-events/blog-post/investing-just-transition>

Stop Climate Injustice

- Ensure that lower-income communities and communities of color are no longer disproportionately harmed by toxic fossil fuel development, production, and use



ENACT THE POLICIES REQUIRED BY SCIENCE:

Endorse here: www.climatesafeca.org

- **Accelerate the phase-out of fossil fuel development, production and use**
- **Increase nature-based sequestration-100 MMT annually by 2030**
- **Invest in community resilience**
- **Fund climate action**

Carbon farming => sequestration at scale

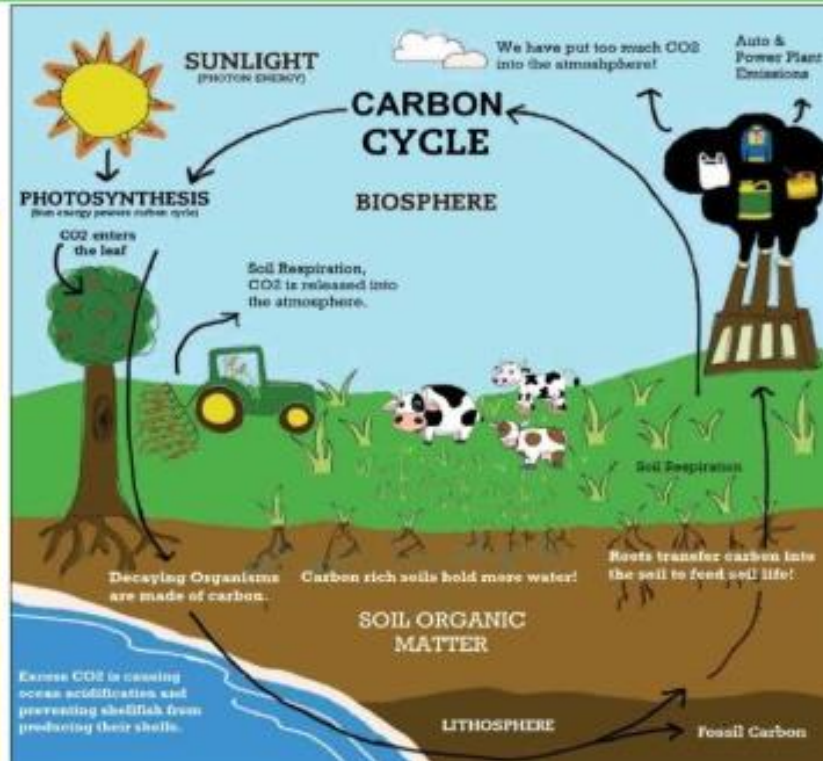
CARBON FARM PLANNING in Marin

Assistance is available for farmers and ranchers!
Plan for carbon sequestration and climate adaptation conservation practices with Marin RCD!

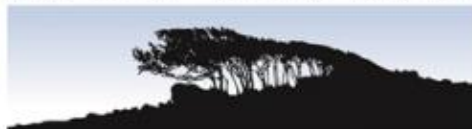
Potential List of Conservation Practice(s)* in a Carbon Farm Plan:

- Compost Application
- Anaerobic Digester
- Silvopasture/ Shrub & Tree Establishment
 - Windbreak/ Shelterbelt/ Hedgerow
 - Riparian and Wetland Restoration
 - Filter Strips
 - Grassed Waterways
 - Forage & Biomass Planting
 - Rangeland Management
- Prescribed Grazing and Range Planting
 - Nutrient Management
- Residue & Tillage Management, No-Till
 - Cover Crops

*NRCS Standard Conservation Practices



MARIN RESOURCE



CONSERVATION DISTRICT

MARIN CARBON PROJECT

Carbon Cycle Institute

the
climate
center

ENDORSE CLIMATE-SAFE CALIFORNIA TODAY!

www.climatesafeca.org



Climate-Safe California
Rapid Decarbonization Campaign
Endorsement Platform

- A public pledge of support for California to accelerate aggressive, equitable climate policy
- Inspiring states and countries to greater action for a climate-safe Earth

CHALLENGE: 30 new endorsements this morning!



Climate Friday Virtual Town Hall - Aug 21, 2020

SOIL AS A CLIMATE SOLUTION

Guest Bios

Torri Estrada, Executive Director, Carbon Cycle Institute

testrada@carboncycle.org www.carboncycle.org

- Program Director, Marin Community Foundation
- Co-founder, Environmental Justice Coalition for Water
- Director, Latino Issues Forum
- Program Director, Urban Habitat.
- MS, Environmental Sociology & Policy, Univ of Michigan
- BS/BA, Environmental Science & Policy, and Ecological Anthropology, UC Berkeley.



Wendy Millet, Ranch Director, TomKat Ranch, LeftCoast Grassfed

wendy@tomkatranch.org www.tomkatranch.org

- The Nature Conservancy working with farmers, ranchers, timberland owners
- Stanford Woods Institute for the Environment
- Cattle and dude ranches in Wyoming and Montana; local land trust, timber investment company, enviro. economics foundation
- B.A. in Literature from Harvard; studied Enviro. Economics at Univ. of Washington & Enviro. Planning at Univ. of Virginia
- Serves on CA Council of Land Trusts Board, Peninsula Open Space Farmland Advisory Committee Trust, and Save the Redwoods League Board



ENDORSE CLIMATE-SAFE CALIFORNIA

Accelerate existing state policy timelines to achieve by 2030:

- 80% below 1990 GHG levels
- Net-negative emissions –*start drawdown for sequestration greater than emissions*
- Resilient communities for *everyone*

THANK YOU!
46 new
endorsements
today!

www.climatesafeca.org www.theclimatecenter.org

