



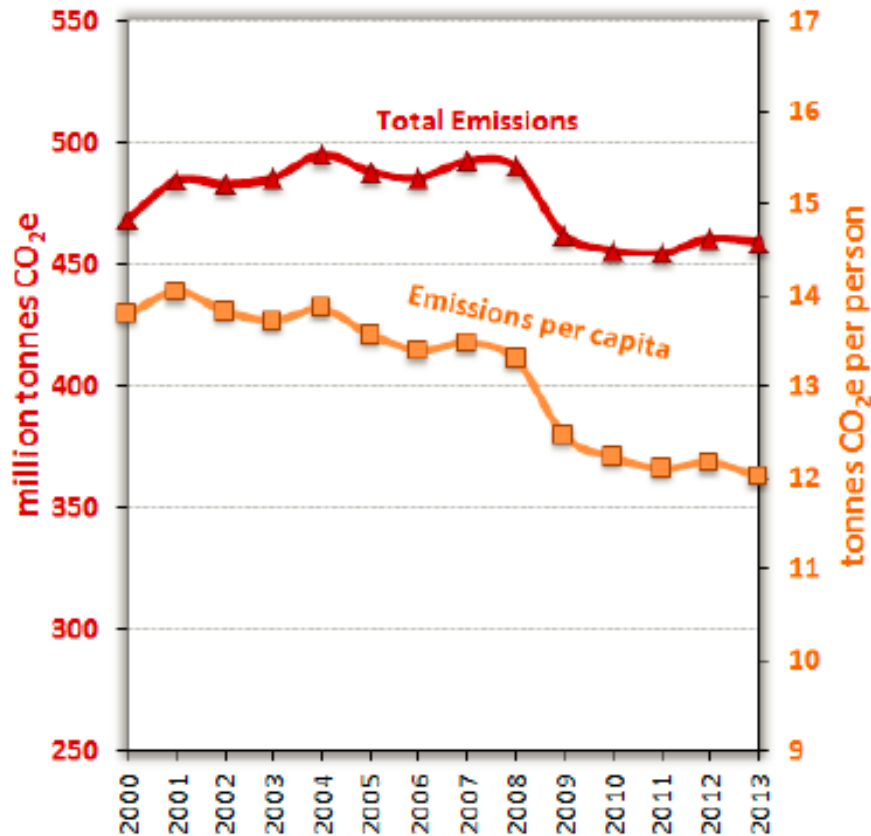
Community Choice Energy Advanced Programs – Going to the Next Level

Panel Presentations and Discussion

Don Bray - Panel Moderator
The Business of Local Energy Symposium
March 2016

In California, transition toward a 'Clean Energy Economy' has begun, but overall progress is slow . . .

Figure 1. California Total and Per Capita GHG Emissions, 2000-2013



GHG emissions reductions 2000-2013:

- 2% in total
- 14% per capita

Many municipal CAP GHG reduction goals in place . . .

- typically ~15% total by 2020

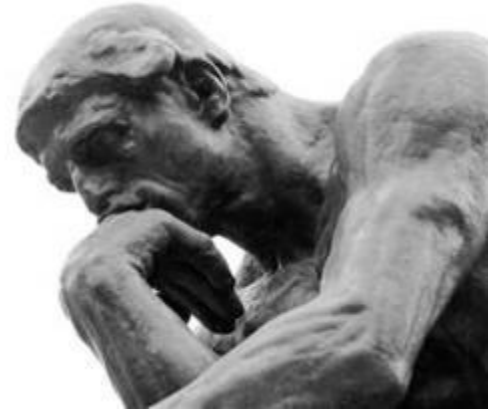
AB32 targets loom large; how do we move the needle?

Source: California Air Resources Board 2015

Community Choice agencies are positioned to play a new and essential role in building a low-carbon 'clean energy economy'.

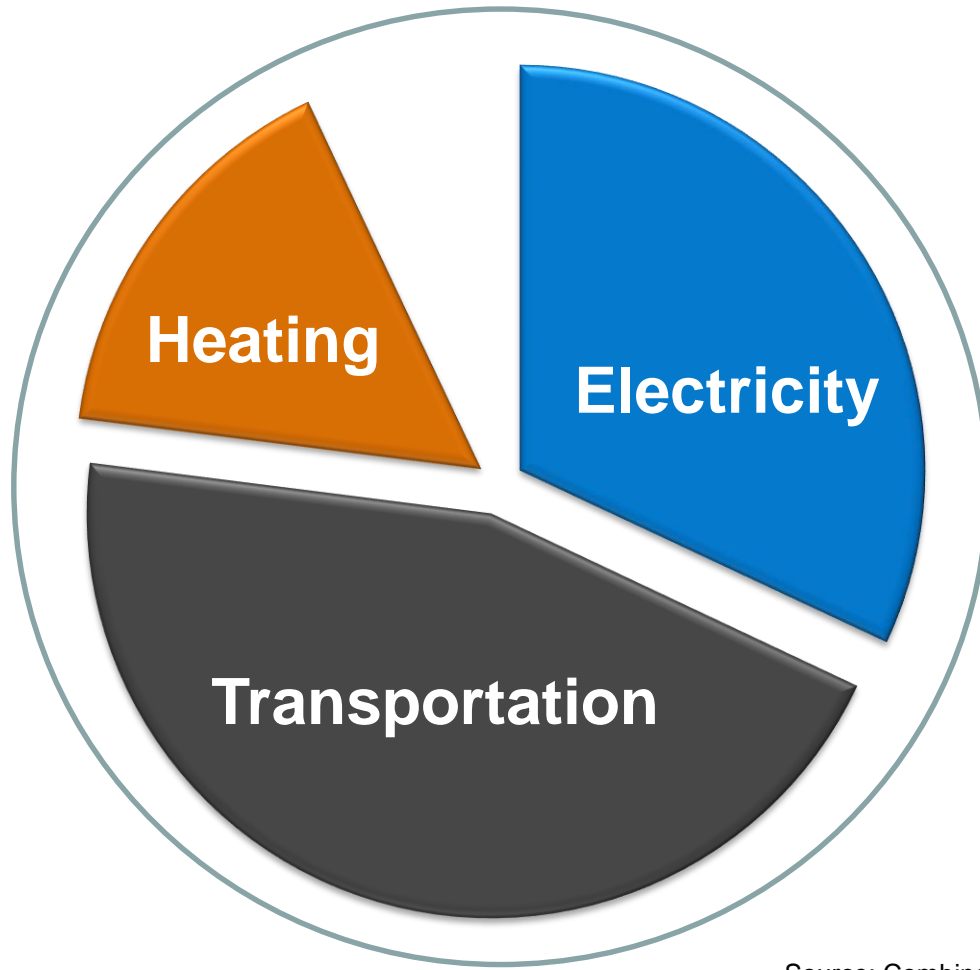
**In the California IOU ecosystem,
consider a new organizational entity that is:**

- locally governed, public, transparent
- chartered to provide competitively-priced clean energy, and enable GHG reduction and energy system transformation
- funded by and accountable to local customers
- staffed with energy expertise
- able to direct local energy investments, programs, tariffs
- 'rightsized' aggregation and leverage across communities
- connected with local planning, policy, public works, and development functions

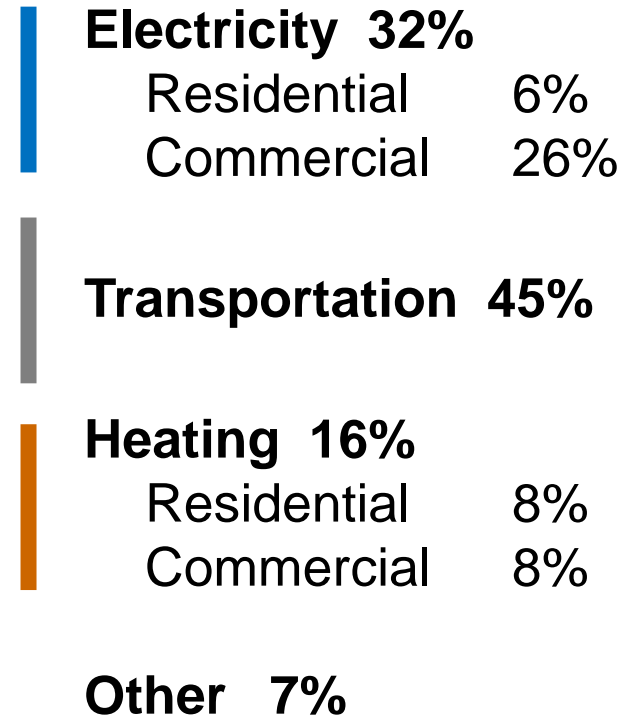


Before MCE, this didn't exist.

CCEs reduce GHGs from electricity; more electrification and efficiency in transportation and the built environment can take this to another level.



Local GHG Emissions Sources*



Source: Combined 2005 GHG Baseline Inventories from Sunnyvale, Mountain View CA

In addition to providing clean and renewable electricity, Community Choice priorities for advanced programs include:

Priority Program Areas

Vehicle Electrification

Zero Net Energy Building

Municipal Infrastructure

Storage and Grid Services

Solution Deployment Priorities

- charging infrastructure at homes, workplaces, corridors, destinations
- EV load management, supporting tariffs
- electrification of building systems
- energy efficiency
- solar with storage
- energy analytics and retro-commissioning
- next-generation street lighting
- water and wastewater treatment
- large-scale storage
- provision of ancillary services
- microgrid applications

Our Panelists . . .

Angie Boakes



General Manager, Electric Mobility
Shell Energy

David Kaneda



Managing Principal
Integral Group

Scott Meinzen



Manager
Siemens Energy and Environmental Solutions

Robert Pierce



Energy Marketing Director
Shell Energy

- Describe example(s) of an advanced 'clean energy' program/solution
- What makes deploying this type of solution on a community-wide scale difficult?
- What role can a Community Choice agency play in making this happen?

Thank You

In summary:

- The first priority of Community Choice agencies is to provide cleaner electricity at competitive prices.
- From there, Community Choice agencies are uniquely positioned to support advanced programs that can transform our energy systems on a regional scale, and accelerate transition to a new clean-energy economy.